



NEW



NEW



CSCLED

HIGH BAYS

Commercial and Industrial LED Lighting

[www.csc-led.com](http://www.csc-led.com)



# CONTENTS

---

HB7B Series	pg. 2
HB7 Series	pg. 6
LHB Series	pg. 10
LHB2 Series	pg. 12
EXPL Series	pg. 14
EXPR Series	pg. 16
NSF Rated High Bay	pg. 18

NEW  
PRODUCT!

# THE HB7B SERIES

---

High Bays

Superior heat dissipation and maximum light transmittance suitable for warehouses, factories, gas stations, and more

New twist-on motion sensor

 CSCLED



Instant Start and  
0-10V Dimmable

2m Power Cord

Long Life  
Elevated Driver  
for Cooler  
Operation

Polyester Powder  
Coat Finish  
(Black)



High Grade  
Aluminum Body  
for Superior  
Heat Dissipation

Clear Glass Lens

Easy Twist-On  
Motion Sensor  
sold separately

## HB7B SERIES MODELS

PRODUCT CODE	WATTS	CCT	LUMENS	VOLTAGE
HB7B-100W-40K-LV-GL	100W	4000K	15,197 lm	120-277V
HB7B-100W-40K-UD-GL	100W	4000K	15,015 lm	120-347V
HB7B-100W-50K-LV-GL	100W	5000K	15,392 lm	120-277V
HB7B-100W-50K-UD-GL	100W	5000K	15,203 lm	120-347V
HB7B-150W-40K-LV-GL	150W	4000K	21,782 lm	120-277V
HB7B-150W-40K-UD-GL	150W	4000K	22,724 lm	120-347V
HB7B-150W-50K-LV-GL	150W	5000K	22,070 lm	120-277V
HB7B-150W-50K-UD-GL	150W	5000K	22,940 lm	120-347V
HB7B-200W-40K-LV-GL	200W	4000K	29,457 lm	120-277V
HB7B-200W-40K-UD-GL	200W	4000K	30,354 lm	120-347V
HB7B-200W-50K-LV-GL	200W	5000K	29,839 lm	120-277V
HB7B-200W-50K-UD-GL	200W	5000K	30,750 lm	120-347V
HB7B-240W-40K-LV-GL	240W	4000K	34,805 lm	120-277V
HB7B-240W-40K-UD-GL	240W	4000K	36,387 lm	120-347V
HB7B-240W-50K-LV-GL	240W	5000K	35,294 lm	120-277V
HB7B-240W-50K-UD-GL	240W	5000K	36,752 lm	120-347V
HB7B-300W-50K-LV-GL	300W	5000K	45,215 lm	120-277V
HB7B-300W-50K-HV-GL	300W	5000K	43,272 lm	277-480V



HB7B-100W-50-LV-GL



HB7B-240W-40K-UD-GL



HB7B-300W-50K-LV-GL



HB7B-300W-50K-HV-GL

## HB7B SERIES ACCESSORIES (ORDERED SEPARATELY)

### PRODUCT CODE

HB7B-WG-SM	Wire Guard for 100W/150W HB7B High Bays
HB7B-WG-LG	Wire Guard for 200W/240W HB7B High Bays
HB7B-WG-HG	Wire Guard for 300W HB7B High Bays
HB7B-YK-SM	Yoke Mount for 100W/150W HB7B High Bays
HB7B-YK-LG	Yoke Mount for 200W/240W HB7B High Bays
HB7B-YK-HG	Yoke Mount for 300W HB7B High Bays
HB7B-FR-LENS-SM	Frosted Lens for 100W/150W HB7B High Bays
HB7B-FR-LENS-LG	Frosted Lens for 200W/240W HB7B High Bays
HB7B-FR-LENS-HG	Frosted Lens for 300W HB7B High Bays
HB7B-AL-REF-SM	Reflector for 100W/150W HB7B High Bays
HB7B-AL-REF-LG	Reflector for 200W/240W HB7B High Bays
HB7B-PC-REF-SM-BCV	Bottom cover for HB7B-PC-REF-SM
HB7B-PC-REF-LG-BCV	Bottom cover for HB7B-PC-REF-LG
HB7B-SENSOR	Motion Sensor for HB7B High Bays
HB7B-REMOTE	Remote for HB7B-SENSOR
HB7B-PC-REF-SM	Reflector for 100W/150W HB7B High Bays
HB7B-PC-REF-LG	Reflector for 200W/240W HB7B High Bays



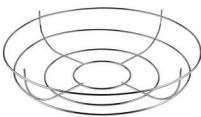
HB7B-SENSOR



HB7B-REMOTE



HB7B-AL-REF-LG



HB7B-WG-LG



HB7B-PC-REF-LG



HB7B-PC-REF-SM-BCV

While  
Supplies Last!

# THE HB7 SERIES

---

High Bays

Shatterproof polycarbonate lens  
and a high-grade aluminum body  
Ideal for factories, warehouses,  
workshops and more

 CSCLED





## Long Life, Elevated Driver

for cooler operation

2m Power Cord

Polyester  
Powder Coat  
Finish  
(black)



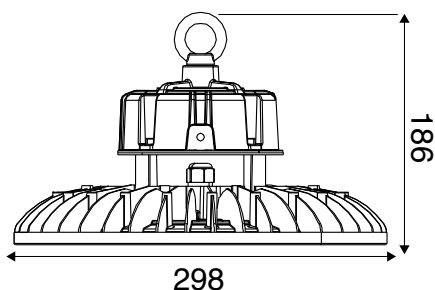
High Grade Aluminum  
Body for Superior  
Heat Dissipation  
(110° beam angle)

Shatter-proof  
Polycarbonate Lens

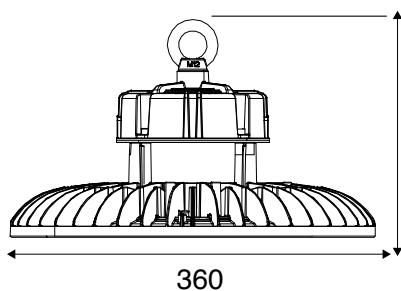
0-10V Dimmable

## HB7 SERIES MODELS (WHILE SUPPLIES LAST)

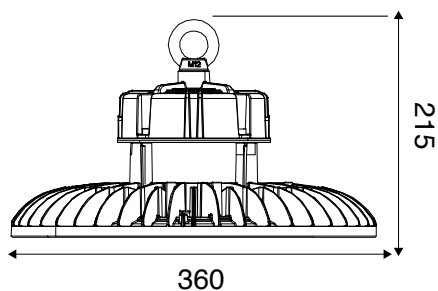
PRODUCT CODE	WATTS	CCT	LUMENS	VOLTAGE	COLOUR
HB7-100W-50K-LV	100W	5000K	13,261 lm	120-277V	Black
HB7-100W-50K-UD	100W	5000K	13,162 lm	120-347V	Black
HB7-200W-40K-LV	200W	4000K	26,468 lm	120-277V	Black
HB7-200W-40K-UD	200W	4000K	26,125 lm	120-347V	Black
HB7-200W-50K-UD	200W	5000K	26,707 lm	120-374V	Black
HB7-240W-50K-UD	240W	5000K	31,153 lm	120-347V	Black
HB7-240W-50K-HV	240W	5000K	31,795 lm	277-480V	Black



HB7-100W-50K-UD



HB7-200W-50K-UD



HB7-240W-50K-UD

## HB7 SERIES ACCESSORIES (ORDERED SEPARATELY)

### PRODUCT CODE

HB7-1M-XCABLE	Extension Cable for HB7 High Bays
HB7-FR-LENS-A	Frosted Glass Lens for 100W and 150W HB7 High Bays
HB7-FR-LENS-B	Frosted Glass Lens for 200W and 240W HB7 High Bays
HB7-PC-REF-A	PC Reflector for 100W and 150W High Bays
HB7-PC-REF-B	PC Reflector for 200W and 240W HB7 High Bays
HB7-PC-REF-A-BCV	Bottom Cover for PC Reflector (HB7-PC-REF-A)
HB7-PC-REF-B-BCV	Bottom Cover for PC Reflector (HB7-PC-REF-B)
HB7-AL-REF-A	Aluminum Reflector for 100W and 150W HB7 High Bays
HB7-AL-REF-B	Aluminum Reflector for 200W and 240W HB7 High Bays
HB7-YK-SM	Yoke Mount for 100W and 150W HB7 High Bays
HB7-YK-LG	Yoke Mount for 200W and 240W HB7 High Bays



HB7-PC-REF-A



HB7-PC-REF-A-BCV



HB7-AL-REF-A



HB7-YK-HG



HB7-1M-XCABLE



HB7-FR-LENS-A

While  
Supplies Last!

# THE LHB SERIES

---

Linear High Bays

Suitable for manufacturing,  
shops and warehouse applications

 CSCLED



120-347V Driver

Steel Housing with White Epoxy Powder Coat Finish



Low Glare Frosted Lens Included  
(Can be removed)

0-10V Dimmable

#### LHB SERIES MODELS (WHILE SUPPLIES LAST)

PRODUCT CODE	WATTS	CCT	LUMENS	VOLTAGE
LHB-110W-40K	110W	4000K	15,527 lm	120-347V
LHB-110W-50K	110W	5000K	15,363 lm	120-347V
LHB-165W-50K	165W	5000K	22,762 lm	120-347V
LHB-220W-40K	220W	4000K	30,581 lm	120-347V
LHB-220W-50K	220W	5000K	30,104 lm	120-347V
LHB-300W-40K	300W	4000K	41,756 lm	120-347V

#### LHB SERIES ACCESSORIES (ORDERED SEPARATELY)

PRODUCT CODE	
LHB-110-165-WG	Wire Guard for 110W and 165W LHB High Bays
LHB-220-WG	Wire Guard for 220W LHB High Bays
LHB-300-WG	Wire Guard for 300W LHB High Bays
LHB-BRACKET-SM	Bracket for 110W, 165W, and 220W LHB High Bays
LHB-BRACKET-LG	Bracket for 300W LHB High Bays
MC054V-RC-D	Microwave Motion Sensor - KO Mount
YM2502	Fixture Mounted Occupancy Sensor

# THE LHB2 SERIES

---

Linear High Bays

Energy efficient replacement for traditional  
fluorescent fixtures and HID High Bays

# Centre Knockout allows for Easy Installation of an Optional Motion Sensor

sold separately



## Instant Start

no flickering or humming



## Soft and Uniform Light

makes it easier on the eyes

## Easy to Install and Operate

## Long Lifespan

saving you time and money

### LHB2 SERIES MODELS

PRODUCT CODE	WATTS	CCT	LUMENS	VOLTAGE
LHB2-110W-40K-UD	110W	4000K	15,509 lm	120-347V
LHB2-165W-40K-UD	165W	4000K	23,364 lm	120-347V
LBH2-220W-40K-UD	220W	4000K	29,424 lm	120-347V
LHB2-220W-50K-UD	220W	5000K	30,108 lm	120-347V
LHB2-300W-40K-UD	300W	4000K	43,063 lm	120-347V
LHB2-300W-50K-UD	300W	5000K	43,547 lm	120-347V

### LHB2 SERIES ACCESSORIES (ORDERED SEPARATELY)

PRODUCT CODE	
LHB-110-165-WG	Wire Guard for 110W and 165W LHB2 High Bays
LHB-220-WG	Wire Guard for 200W LHB2 High Bays
LHB-300-WG	Wire Guard for 300W LHB2 High Bays
LHB-BRACKET-SM	Bracket for 110W, 165W, and 200W LHB2 High Bays
LHB-BRACKET-LG	Bracket for 300W LHB2 High Bays
HB01DMS-B	Motion Sensor
HB01R	Remote Control (Required for HB01DMS-B)

NEW  
PRODUCT!

# THE EXPL SERIES

---

Linear Explosion-Proof High Bays

Suitable for hazardous environments where flammable gases or vapours, flammable liquids, and combustible dust and/or ignitable fibers may exist

C1, D2 (Groups A,B,C,D)

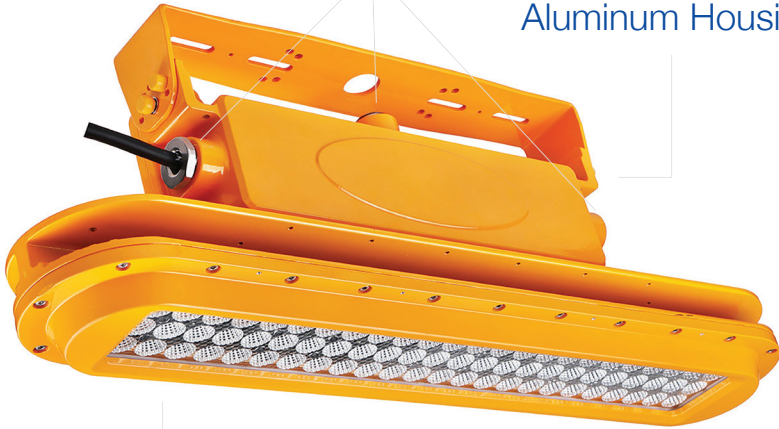


IP66 Driver In  
Separate Compartment  
10K surge protection



3 x 3/4" NPT  
Conduit Entry Points  
for added flexibility

Rugged Die Cast  
Aluminum Housing



Tempered Glass Lens  
allows for soft uniform light

Faceted Reflectors  
in each LED chip for glare  
control and beam precision

**EXPL SERIES MODELS**

PRODUCT CODE	WATTS	CCT	LUMENS	VOLTAGE
EXPL-40W-2FT-50K	40W	5000K	5,881 lm	120-277V
EXPL-80W-4FT-50K	80W	5000K	11,202 lm	120-277V

**EXPL SERIES ACCESSORIES (ORDERED SEPARATELY)**

PRODUCT CODE	
EXPL-WG-2FT	Wire Guard for EXPL 2ft Fixtures
EXPL-WG-4FT	Wire Guard for EXPL 4ft Fixtures

NEW  
PRODUCT!

# THE EXPR SERIES

---

Round Explosion-Proof High Bays

Suitable for hazardous locations,  
wet locations, marine environments,  
and high vibration applications

C1, D2 (Groups A,B,C,D)

IP66 Driver in  
Separate Compartment  
10k surge protection



Rugged Die Cast  
Aluminum Housing



Tempered Glass Lens  
allows for soft uniform light

Faceted Reflectors  
in each LED chip for glare  
control and beam precision

**EXPR SERIES MODELS**

PRODUCT CODE	WATTS	CCT	LUMENS	VOLTAGE
EXPR-60W-50K	60W	5000K	8,870 lm	120-277V
EXPR-100W-50K	100W	5000K	15,967 lm	120-277V
EXPR-150W-50K	150W	5000K	23,834 lm	120-277V

**EXPR SERIES ACCESSORIES (ORDERED SEPARATELY)**

PRODUCT CODE	
EXPR-WG-SM	Wire Guard for EXPR 60W Fixtures
EXPR-WG-LG	Wire Guard for EXPR 100W/150W Fixtures

While  
Supplies Last!

# THE NSF RATED HIGH BAY

---

Food Grade High Bay

Ideal for food processing facilities,  
supermarkets, restaurants and more



Sleek, Smooth Design

Non-toxic Material



No Glass or Exposed Screws

Fresnel Lens  
Superior light distribution  
Higher lumen output

Get them before they're gone!

5 ft Cable, 5 ft Safety Chain,  
and 2 pc Hanging Ring Included

**NSF RATED HIGH BAY**

PRODUCT CODE	WATTS	CCT	LUMENS	VOLTAGE
HL-HB150P1990	150W	5000K	20,646 lm	120-277V



## DISTRIBUTORS

Set up your online account to view pricing and product availability

## CONTRACTORS

Contact your preferred electrical wholesaler for more information

Visit [www.csc-led.com](http://www.csc-led.com) to learn more about our other products, technical specifications, certifications, customer testimonials, and more.

## VISIT OUR WEBSITE TO VIEW OUR FULL PRODUCT LINE

Canopy Lights

Hazloc

Horticultural

Corn Lamps

Panel Lights

Security Lights

Solar Lights

Street Lights

Vapour-Proof

Work Lights

T-Grid

and more!

## FLOOD / AREA LIGHTS

Sleek, streamlined and versatile designs, suitable for almost all indoor and outdoor applications



## HIGH BAYS

Made with the highest quality materials and ideal for warehouses, factories, and more.



## Ontario Head Office

8 - 540 Jamieson Parkway  
Cambridge, ON Canada N3C 0G5

orders@csc-led.com

(519) 880 - 9833

## British Columbia Office

121-1647 Broadway Street  
Port Coquitlam, BC Canada V3C 6P8

ordersbc@csc-led.com

(778) 730 - 0448

[info@csc-led.com](mailto:info@csc-led.com)

## CSCLED Sales Agents

### ALBERTA / SASKATCHEWAN

Sensible Adaptive Solutions

P: (403) 519-4209

(403) 869-8252

[www.sensibleadaptive.com](http://www.sensibleadaptive.com)

### ONTARIO

Roney Marketing Ltd.

P: (905) 595-1344

[www.roneymk.com](http://www.roneymk.com)

### BRITISH COLUMBIA

Ken Watt & Associates

P: (604) 576-2838

[www.kenwattassoc.com](http://www.kenwattassoc.com)

### NEWFOUNDLAND AND LABRADOR

RWM Enterprises

P: (709) 682-4012

### MANITOBA

TMC Sales

P: (204) 837-5036

[www.tmcsales.ca](http://www.tmcsales.ca)

### QUÉBEC

Éclairage Hi-Tech Inc.

P: (450) 442-7604

[www.eclairagehitech.com](http://www.eclairagehitech.com)



The information provided in our print catalogues and on our website has been gathered and assembled with every effort made to verify the accuracy of the content; however, mistakes can happen. The information in this document is subject to change without notice. If you have any questions or comments, please reach out to us at [marketing@csc-led.com](mailto:marketing@csc-led.com)