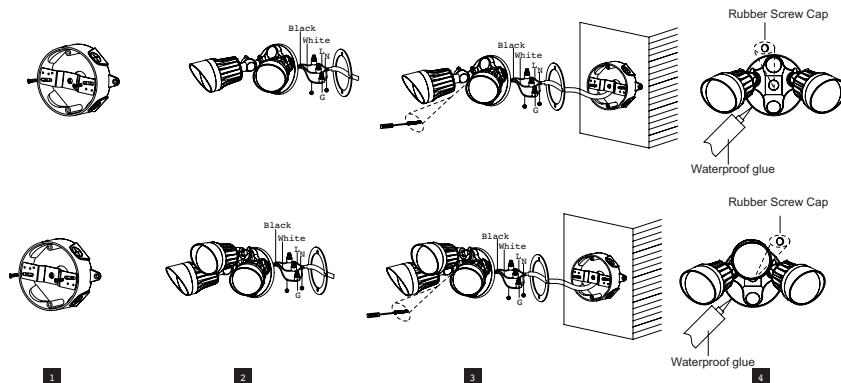




Motion Security Light Installation Instructions

<p>Dual head Security Light+Base+ AUTO SENSOR</p>	<p>Triple head Security Light+Base+ AUTO SENSOR</p>
<p>Dual head Security Light+Base+Photocell</p>	<p>Triple head Security Light+Base+Photocell</p>

Security Light & Base Installation



1. Attach the bracket to junction box.
2. Pass wires from junction box through supplied gasket (B) by terminal blocks (G)
 - a) Connect the white wire to neutral
 - b) Connect black wire to line 1 (or black)
 - c) Connect the yellow and green wire to ground.
3. Assemble light and gasket to junction box.

NOTE: Insure all power wires are free from being pinched.
4. Cover the screw cap, use silicone to seal the rear cover and light to make sure the lamp is waterproof.

Motion detector description:

1. Mode is adjustable by adjusting the left side 3 switches as follows: On-Time/Auto/D2D
2. Photo sensor sensitivity is adjustable (0-∞Lux) -, by rotating the first knob clockwise, the corresponding light intensity value gets larger, and vise versa.
3. Stand-by time is adjustable (5 seconds - 5 minutes), by rotating the second knob clockwise, the corresponding delay time gets longer, and vise versa.
4. The MAX detection distance is adjustable (6-21m), by rotating the third knob clockwise, the corresponding detect distance gets longer and vise versa.

