

# 2'x 2' Premium Panel

20W, 30W, 40W Selectable | Colour Tunable | 120-347V

High performance, light-weight luminaires suitable for lay-in, surface or pendant mounting  
Ideal for use in schools, health care applications, offices, retail spaces, and more

Less than 1.8" Deep  
ideal for tight plenum areas

Use Switches to Select Colour  
Temperature and Wattage

Non-yellowing  
Frosted Lens

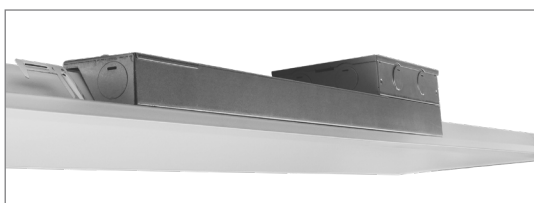
120-347V, 0-10V  
Dimmable Driver

Wattage Selectable  
(20W / 30W / 40W)

Seismic Clips  
Included

CCT Tunable  
(3000K/3500K/4000K)

Waffle Stamping  
increases heat dissipation  
and driver life

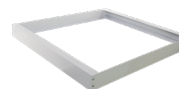


0-10V Dimming Leads on Both  
Sides of Optional Junction Box  
Junction Box (PLS-JB) sold separately

Accessories (Sold Separately)



Suspension Kit  
PLS-SUSKIT



Surface Mount Kit  
PLS22-SK



Junction Box  
PLS-JB



Recessed Frame Kit  
PLS22-RFK

## TECHNICAL DATA



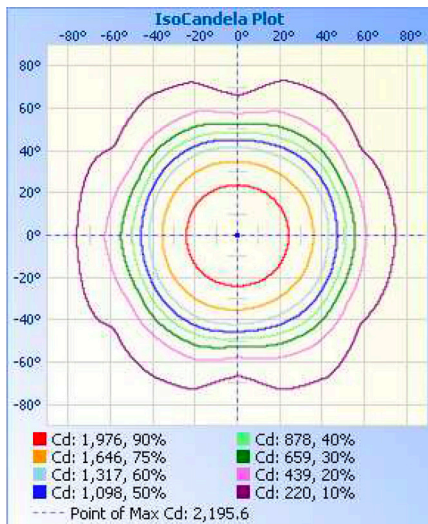
### LIGHT SPECIFICATIONS

Lumens	5,000 lms @ 3000K
Efficacy	125 lm/w
CCT	Tunable (30K/35K/40K)
CRI	80
Dimmable	0-10V
Beam Angle	120°
L70 Life	50,000 hrs
Warranty	7-year

### APPROVALS AND LISTINGS

ETL	5000444
-----	---------

### ISOCANDELA PLOT



### ILLUMINANCE AT A DISTANCE

Center Beam fc	Beam Width	
	Vertical Spread	Horizontal Spread
17.0ft	7.60 fc	34.3 ft 35.9 ft
34.0ft	1.90 fc	68.7 ft 71.8 ft
51.0ft	0.84 fc	103.0 ft 107.7 ft
68.0ft	0.47 fc	137.4 ft 143.6 ft
85.0ft	0.30 fc	171.7 ft 179.5 ft
102.0ft	0.21 fc	206.1 ft 215.4 ft

■ Vert. Spread: 90.6°  
■ Horiz. Spread: 93.1°

### ELECTRICAL

Wattage	Selectable (20W/30W/40W)
Voltage	120-347V
Power Factor	0.9
THD	8%
Operating Temp	-20 to 40°C

### CONSTRUCTION

Housing	Metal
Finish	White
IP Rating	IP20
Product Dimensions	23.75 x 23.75 x 1.67 in
Carton Qty	4

### ACCESSORIES (SOLD SEPARATELY)

PLS22-SK	Surface Mount Kit
PLS22-RFK	Recessed Frame Kit
PLS-SUSKIT	Suspension Kit
PLS-JB	Junction Box

### DIMENSIONAL DRAWINGS (IN)

