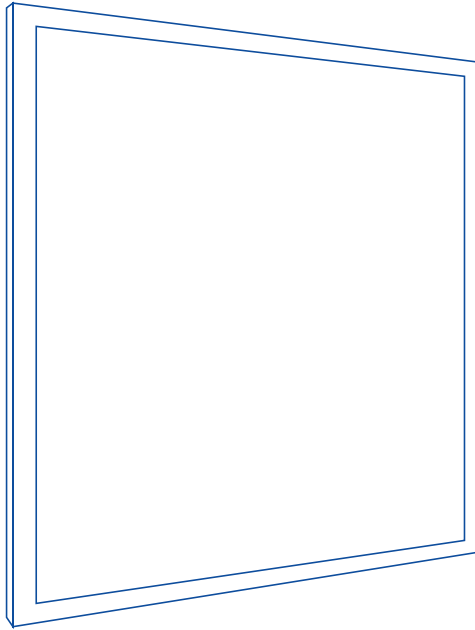




PLB Panel Light

Installation Instructions



CAUTION! Risk of Electrical Shock

Ensure power is off before installation, wiring, or performing any maintenance on the fixture

PRIOR TO INSTALLATION

IMPORTANT: Read all instructions carefully before installing or performing any maintenance on these fixture(s).

- This fixture must be wired in accordance with all local electrical codes.
- Inspect the fixture prior to installation to ensure the panel has not been damaged in shipping.
- Ensure power is off prior to installing or servicing.
- Check that voltage is compatible with the fixture driver. Only use approved connectors for all electrical connections.

WIRING INSTRUCTION

WARNING: Turn off power before connecting wires

For 0-10V dimming, the wiring direction is as follows:

1. Turn off the power.
2. Open the junction box.
3. Wire as shown in Fig. 1.
4. Close the junction box plate.

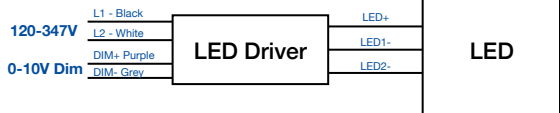
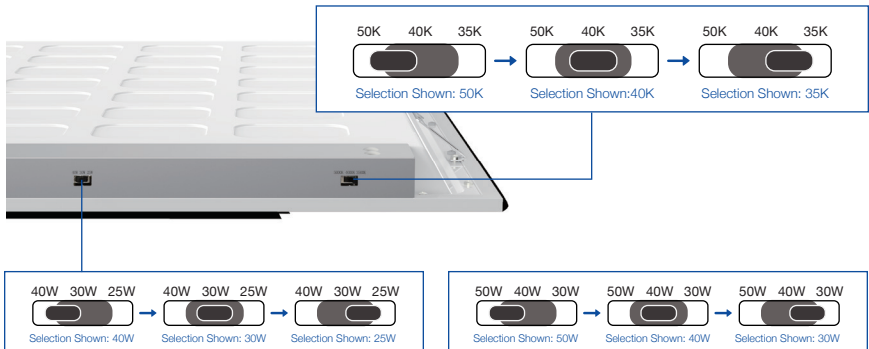


Fig. 1

DIP SWITCHES

1. Locate the DIP switches on the side of the fixture.
2. Select the appropriate switch position for the desired wattage and colour temperature.



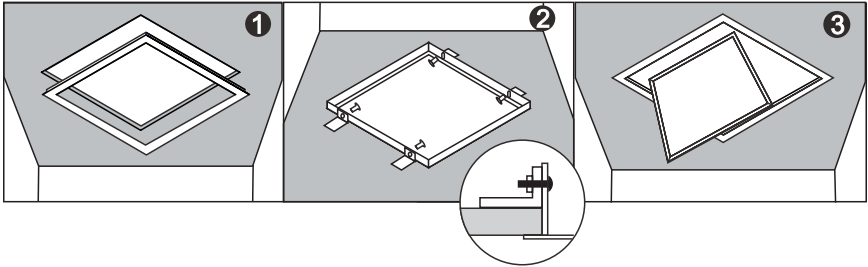
For 40W Models

For 50W Models

RECESSED FRAME INSTALLATION

NOTE: Recessed Frame Kit Sold Separately.

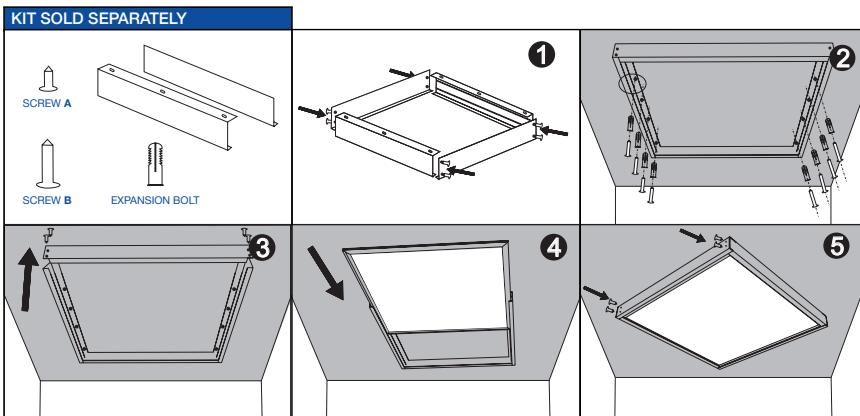
1. Put the frame into the hole.
2. Fix the frame on the hole with tabs.
3. Drop the fixture into the recessed mounting frame.



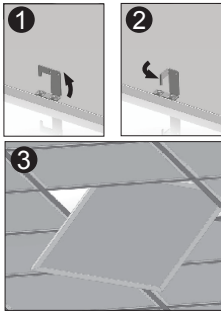
SURFACE MOUNT INSTALLATION

NOTE: Surface Mount Kit Sold Separately.

1. Assemble the frame with Screw A to form the shape of your fixture.
2. Fix the square frames to the ceiling with Screw B and Expansion Bolts.
3. Remove one side of the frame.
4. Slide the fixture into the opening of the frame.
5. Replace the side of the frame you took off in **Step 3** and fix with Screw A.

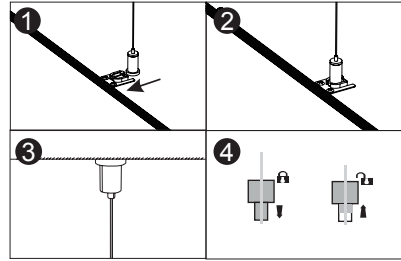


LAY-IN (T-BAR)



SUSPENSION

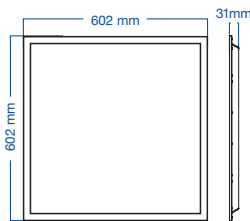
NOTE: Suspension Kit Sold Separately.



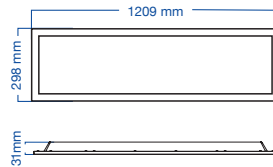
NOTES FOR MAINTENANCE

- Turn the power off before performing any maintenance.
- Ensure the fixture has completely cooled before performing any maintenance.
- This fixture must be installed and maintained in accordance with local code by a professional who is familiar with the construction, operation, and hazards that may be involved.
- Only clean the fixture using a dry cloth. **DO NOT** use any chemicals.

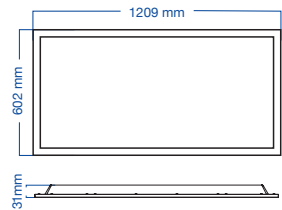
DIMENSIONAL DRAWINGS



PLB22-40W-3CCT-WS-UD



PLB14-40W-3CCT-WS-UD



PLB24-50W-3CCT-WS-UD

Questions or Concerns? We are happy to help!

Email Us: info@csc-led.com

Call Us: 1-888-900-9885