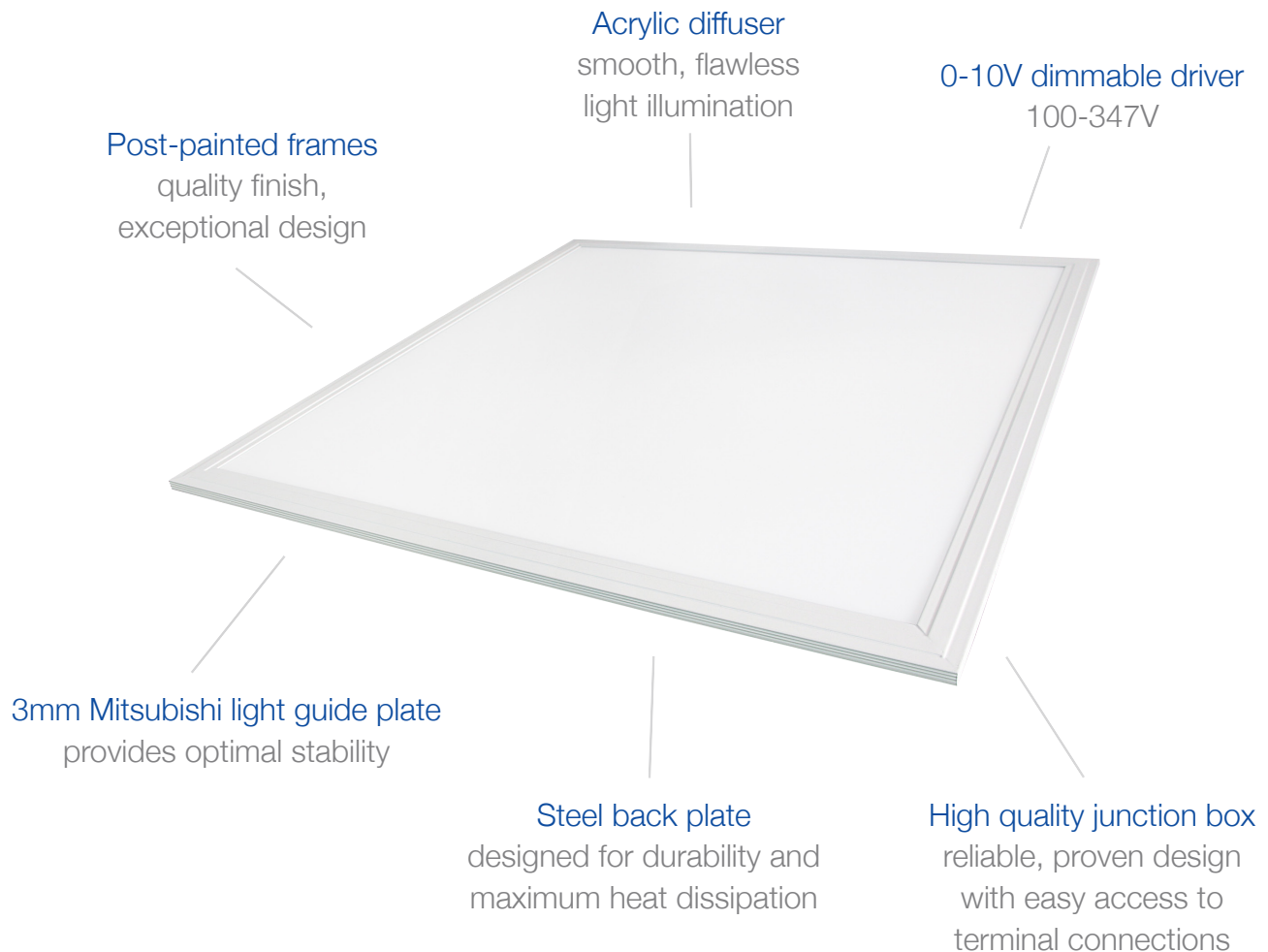


Premium Panel Light

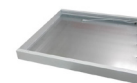
30W | 4000K | 2x2



Ideal for office lighting, basement lighting, light box and sign back-lighting, gym lighting, school lighting, hospital lighting and more.



Optional Surface Mount Kits and Cable Kits available, sold separately.
See reverse for details and ordering information.



Surface Mount Kits



Cable Kits

TECHNICAL DATA



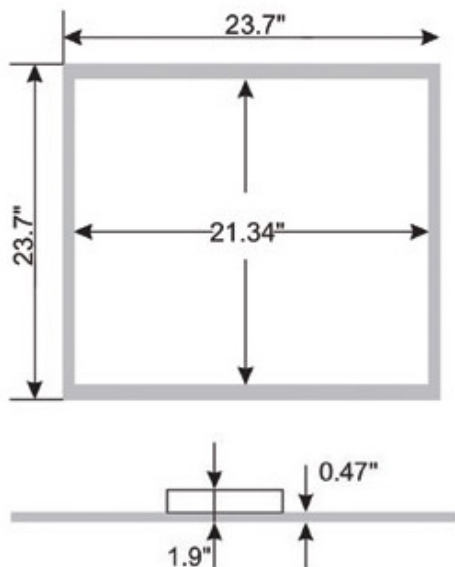
LIGHT SPECIFICATIONS

Lumens	3,979
Efficacy	126 lm/W
CCT	4000K
CRI	82.5
Dimmable	0-10V
Rated Hours	50,000
Warranty	7-year

APPROVALS AND LISTINGS

cUL	E491106
DLC PREMIUM	PL3UF0EI4TCH

DIMENSIONS



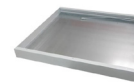
ELECTRICAL

Wattage	30W
Voltage	100-347V
Power Factor	0.88
THD	18.49 %
Operating Temp	-20° to 40°C

CONSTRUCTION

Framing	Aluminum Alloy
Colour	White
IP rating	IP54
Carton qty	4

ACCESSORIES (Ordered Separately)



Surface Mount Kits PL22-SK



Cable Kits PL22-CABLE-KIT