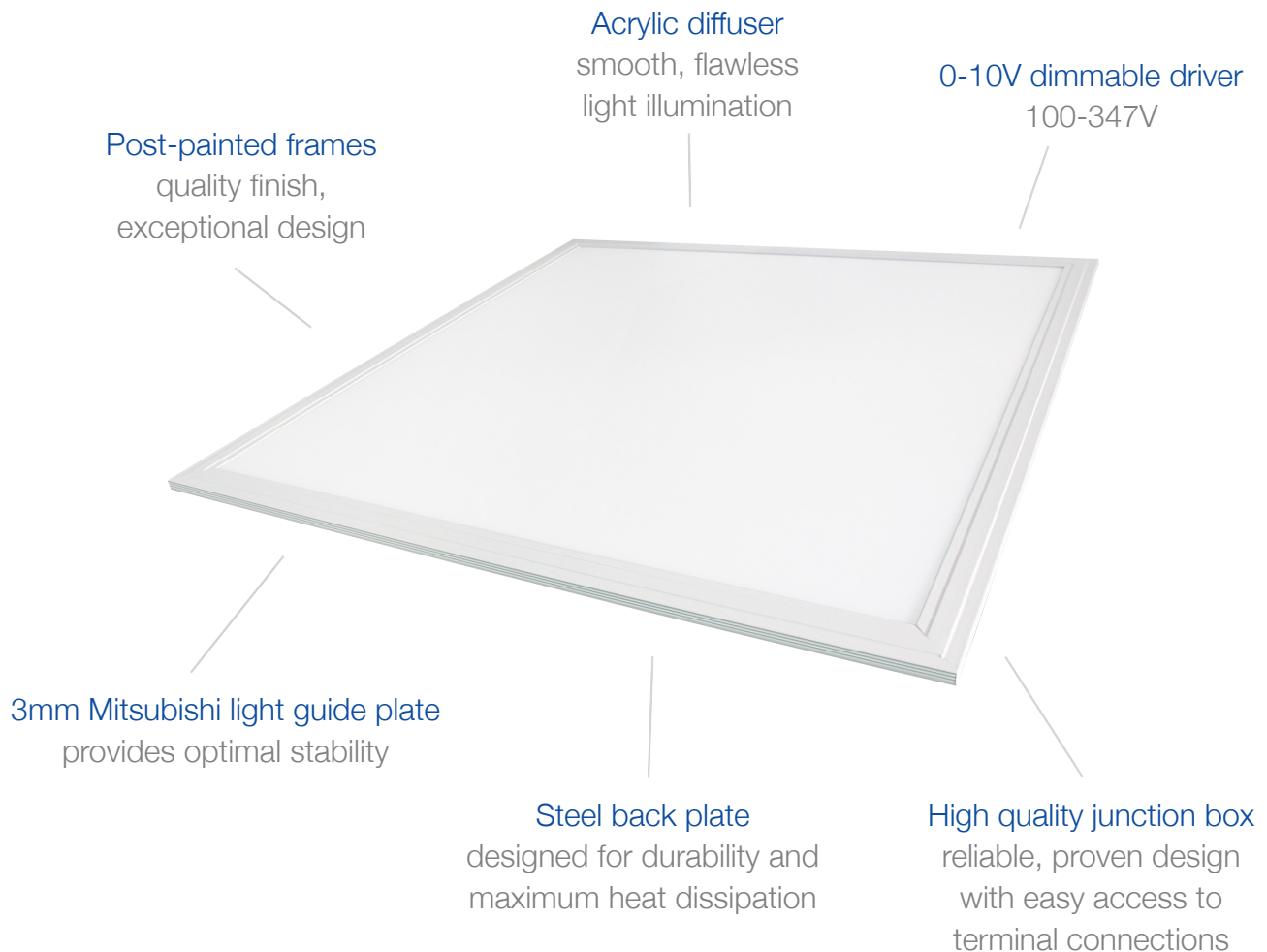


Premium Panel Light

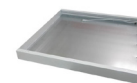
30W | 3500K | 2x2



Ideal for office lighting, basement lighting, light box and sign back-lighting, gym lighting, school lighting, hospital lighting and more.



Optional Surface Mount Kits and Cable Kits available, sold separately.
See reverse for details and ordering information.



Surface Mount Kits



Cable Kits

TECHNICAL DATA



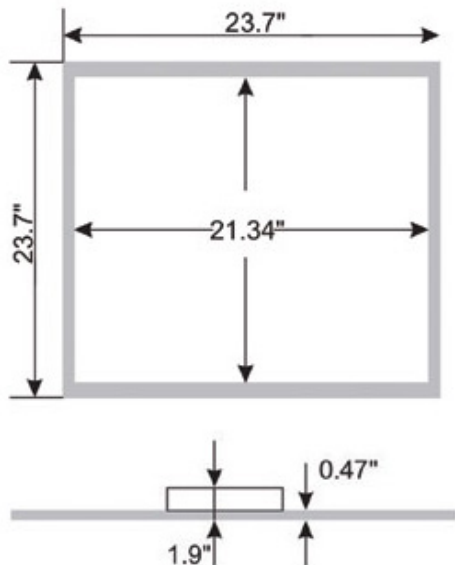
LIGHT SPECIFICATIONS

| | |
|-------------|----------|
| Lumens | 3,955 |
| Efficacy | 126 lm/W |
| CCT | 3500 K |
| CRI | 82.5 |
| Dimmable | 0-10V |
| Rated Hours | 50,000 |
| Warranty | 7-year |

APPROVALS AND LISTINGS

| | |
|-------------|--------------|
| cUL | E491106 |
| DLC PREMIUM | PLZMJM3RPKNQ |

DIMENSIONS



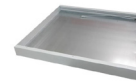
ELECTRICAL

| | |
|----------------|--------------|
| Wattage | 30W |
| Voltage | 100-347V |
| Power Factor | 0.88 |
| THD | 18.49 % |
| Operating Temp | -20° to 40°C |

CONSTRUCTION

| | |
|------------|----------------|
| Framing | Aluminum Alloy |
| Colour | White |
| IP rating | IP54 |
| Carton qty | 4 |

ACCESSORIES (Ordered Separately)



Surface Mount Kits PL22-SK



Cable Kits PL22-CABLE-KIT