

50W Streamline Flood Light

streamline
designer flood light series

Ideal for landscape lighting, architectural flood lighting, and interior wall washing



TECHNICAL DATA



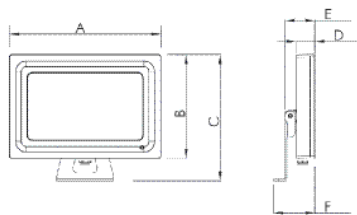
LIGHT SPECIFICATIONS

Lumens	5,820 lm
Efficacy	117.84 lm/W
CCT	4,000K
Beam angle	110°
CRI	82.6
Rated hours	35,000
Warranty	5-year

APPROVALS AND LISTINGS

cUL	E482965
DLC	PPTTYWBS

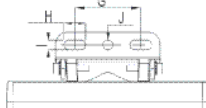
DIMENSIONS



FL02-50W

Unit: mm | Tolerance: ± 1 mm

A: 298 B: 210
 C: 264 D: 36
 E: 55 F: 76
 G: 50 H: 18
 I: 8 J: Ø 8



50cm cable included.

ELECTRICAL

Wattage	50W
Voltage	120-277V
Power factor	0.94
THD	14.20%
Operating temp	-20° to 40°C

CONSTRUCTION

Housing	Die-cast aluminum
Finish	Powder coat
Colour	Black
IP rating	IP65
Weight	5.20 lbs
Carton qty	6

NOTES

50cm cable included

DISTRIBUTION CURVE FLUX/TEMP

