



Meet the Robust & Compact

# LHB04

## Linear High Bays

Power Selectable

Colour Selectable

0-10V Dimmable

Complete with 10' Cord Whip

The successor to our best-selling LHB03 Linear High Bays! Ideal for warehouses, factories, workshops, and more. Energy efficient replacement for traditional fluorescent fixtures and HID high bays



# LHB04 LINEAR HIGH BAYS

Ideal for warehouses, factories, workshops, and more.

## ALL THE FEATURES YOU WILL EVER NEED

These robust and compact Linear High Bays have die-cast aluminum housing and a polycarbonate lens that provides better protection than sheet metal frames used in traditional High Bays.

This series has a standard 10ft cord whip, a lightweight and compact body compared to traditional high bays, and several mounting options; all of which make installation a breeze!

You can now connect the fixture to the correct voltage and adjust the wattage and colour temperature with ease. Take advantage of the 0-10V dimming to configure the luminaire to meet the needs of your project without needing to order specific options.

Rest assured that you can easily adjust the luminaire to meet your needs and preferences even after installation. Now that's peace of mind!



For information on the complete series including IES files, spec sheets, and more, visit [www.csc-led.com](http://www.csc-led.com)



Check out our YouTube channel for more information on our products!

### Power Selectable

70W / 90W / 110W  
110W / 130W / 150W  
180W / 200W / 220W  
255W / 275W / 295W

### Colour Selectable

3500K / 4000K / 5000K

### Easily Surface or Pendant Mount

2 mounting hooks and 2 x 40" chains included

### 10' Cord Whip Standard

### 120-347V Universal Driver

0-10V dimming

### Motion Sensor Compatible

### Die-Cast Aluminum Housing

### Polycarbonate Lens

## ACCESSORIES

Accessories to meet your projects every need (sold separately)



Motion Sensor  
MS04-MW-TW-DC



Infrared Motion Sensor  
MS01-PIR-TW-DC

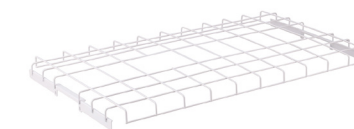


Emergency Driver  
YH36-25WL-300

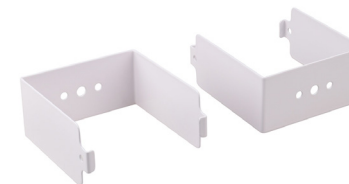
120-347V



Pendant Mount  
LHB04-BKT | LHB04-BKT-XL



Wire Guard  
LHB04-WG-SM | LHB04-WG-LG | LHB04-WG-XL



Surface Mount Kit  
LHB04-SK | LHB04-SK-XL



Remote Control  
MS04-RC

## Lumen Output Tables and Product Numbers

LHB04-110W-3P-3CCT-UD			
	3500K	4000K	5000K
70W	10318 lm	10742 lm	10616 lm
90W	12870 lm	13580 lm	13265 lm
110W	14929 lm	16113 lm	15285 lm
LHB04-150W-3P-3CCT-UD			
	3500K	4000K	5000K
110W	15437 lm	16275 lm	15960 lm
130W	17780 lm	19155 lm	18551 lm
150W	19745 lm	21483 lm	20790 lm
LHB04-220W-3P-3CCT-UD			
	3500K	4000K	5000K
180W	25609 lm	27258 lm	26536 lm
200W	27760 lm	29713 lm	28922 lm
220W	28821 lm	32020 lm	31303 lm
LHB04-295W-3P-3CCT-UD			
	3500K	4000K	5000K
255W	38345 lm	39930 lm	38464 lm
275W	40583 lm	42471 lm	40820 lm
295W	43256 lm	46571 lm	45826 lm







# WHY CHOOSE US AS YOUR LIGHTING PARTNER

## SAFETY IN DECISION:

We began 18 years ago in 2005, and have been wholly committed to LED lighting ever since. If you ever have an issue with our products, rest assured we'll be there to help, and will never leave you hanging! We sell **ONLY** through channel (wholesale), never direct to the end user.

## INVENTORY:

We have 3 fully loaded warehouses across Canada (ON, AB, BC). Everything at CSC LED is **QUICK SHIP!** In many cases, receive your order the next day. With an online account, view your NET cost and live inventory levels at the click of a button. A **2% discount** applies when you order online. We can ship to your branch or drop ship direct to your customer (no pricing shown on packing slips). \$250 Prepaid\* shipping on most orders.

## TECHNICAL SALES SUPPORT:

We have lighting specialists ready to assist with your selections, project designs, lighting calculations, and quotations. Our website has embedded lighting calculation tools as well as a rebate finder and ROI calculator. As always, CSC LED staff is ready to assist. **Lightning fast by industry standards!**

## WEB & WEB SUPPORT:

If you haven't seen our web portal, prepare to be amazed! Easy to navigate, easy to order, and saves you time. Our IT team has also built an API that enables your website to pull our inventory data. If your website has the capability, our stock becomes your stock, on your website, without human intervention or input. This can also include automatic pricing with your built-in margin. Once again, saving you time and increasing your selling capabilities.

## 2 MOBILE SHOWROOMS:

We have 2 mobile showrooms available for your special events and joint contractor visits. These rolling beauties are powerful sales tools that go almost anywhere. Ask your local sales agent for more information.

\* \$250 PPD shipping to all wholesale branches in Canada. Surcharge may apply for drop ship to remote locations.



## CONTRACTOR REWARDS

Beginning October 1st, 2023, CSC LED launched its Contractor Rewards Program. Your contractors can now earn points that can be used towards gift cards and other cool rewards. Who doesn't like free stuff?

Learn more by visiting [www.csc-led.com/rewards](http://www.csc-led.com/rewards)

### HEAD OFFICE:

8 - 540 Jamieson Pkwy,  
Cambridge, ON, N3C 0G5  
orders@csc-led.com | (519) 880 - 9833

### ALBERTA WAREHOUSE

13 - 2355 52 Ave SE,  
Calgary, AB, T2C 4X7  
ordersbc@csc-led.com | (403) 907 - 0212

### BRITISH COLUMBIA OFFICE

1140 - 2375 Fremont Street,  
Port Coquitlam, BC, V3B 0N9  
ordersbc@csc-led.com | (778) 730 - 0448

## Let's Go Social!



cscledcorp