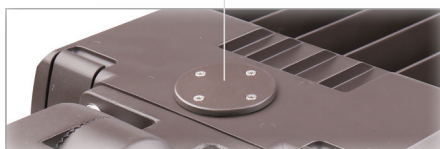


FL04B Concorde Series

TRUE UNIVERSAL POWER INPUT FROM 120-347V!

A versatile, clean, and modern appearance that brings a pleasing aesthetic to any project

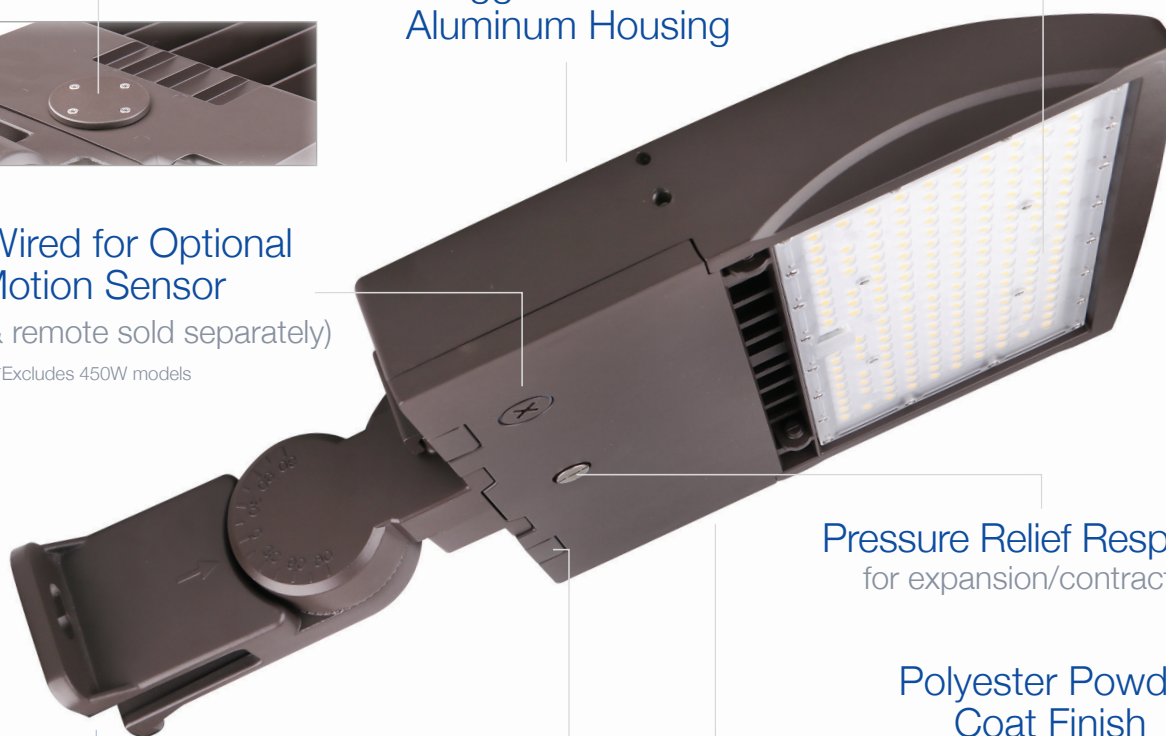
Removable Access Plate
for easy field installation of
twist lock photocell receptacle



Type III Polycarbonate Optics
Type IV and V Available

Rugged Die Cast Aluminum Housing

Pre-Wired for Optional Motion Sensor
(Sensor & remote sold separately)
*Excludes 450W models



Pressure Relief Respirator
for expansion/contraction

Polyester Powder Coat Finish
Bronze standard
White available

Complete with Trunnion
Interchangeable mounting
options sold separately

Quick-Release, Hinged Access Cover
for control compartment



PICTURED: FL04B 100W - 200W

PICTURED: FL04B 240W / 300W

PRODUCT #	WATTS	VOLTAGE	CCT	LUMENS	EFFICACY	CTN QTY
FL04B-60W-40K-UD	60W	120-347V	4000K	8,123 lm	Bronze	1
FL04B-80W-40K-UD	80W	120-347V	4000K	10,606 lm	Bronze	1
FL04B-100W-30K-UD	100W	120-347V	3000K	13,585 lm	Bronze	1
FL04B-100W-40K-UD	100W	120-347V	4000K	13,990 lm	Bronze	1
FL04B-100W-50K-UD	100W	120-347V	5000K	14,046 lm	Bronze	1
FL04B-150W-30K-UD	150W	120-347V	3000K	19,302 lm	Bronze	1
FL04B-150W-40K-UD	150W	120-347V	4000K	20,423 lm	Bronze	1
FL04B-150W-50K-UD	150W	120-347V	5000K	20,510 lm	Bronze	1
FL04B-150W-50K-UD-WH	150W	120-347V	5000K	20,510 lm	White	1
FL04B-200W-30K-UD	200W	120-347V	3000K	24,216 lm	Bronze	1
FL04B-200W-40K-UD	200W	120-347V	4000K	26,349 lm	Bronze	1
FL04B-200W-50K-UD	200W	120-347V	5000K	26,455 lm	Bronze	1
FL04B-240W-40K-UD	240W	120-347V	4000K	34,784 lm	Bronze	1
FL04B-240W-50K-UD	240W	120-347V	5000K	34,805 lm	Bronze	1
FL04B-300W-30K-UD	300W	120-347V	3000K	38,796 lm	Bronze	1
FL04B-300W-40K-UD	300W	120-347V	4000K	41,315 lm	Bronze	1
FL04B-300W-50K-UD	300W	120-347V	5000K	41,344 lm	Bronze	1
FL04B-300W-50K-UD-WH	300W	120-347V	5000K	41,344 lm	White	1
FL04B-450W-40K-UD	450W	120-347V	4000K	62,229 lm	Bronze	1
FL04B-450W-50K-UD	450W	120-347V	5000K	62,777 lm	Bronze	1
FL04B-TYPE-IV	Type IV Optics (order 2 for 240W-300W fixtures)					
FL04B-TYPE-V	Type V Optics (order 2 for 240W-300W fixtures)					
HB01DMS-A	Motion Sensor for 60W-300W fixtures					
HB01DMS-B	Motion Sensor for 450W fixtures					
HB01R	Motion Sensor Remote (required for HB01DMS-A and HB01DMS-B)					
JL-200 and JL-205LV	Photocell and Receptacle for 120-277V site					
JL-200 and JL-207E	Photocell and Receptacle for 277-480V site					
FL04B-SHIELD-SM	Shield for 100W, 150W, 200W fixtures					
FL04B-SHIELD-LG	Shield for 240W, 300W fixtures					
FL04-SF	Slip Fitter (Bronze)					
FL04-SF-WH	Slip Fitter (White)					
FL04-MM	Multi-Mount (Bronze)					
FL04-MM-WH	Multi-Mount (White)					
FL04-PM	Pole Mount (Bronze)					
FL04-PM-WH	Pole Mount (White)					
FL04-YK-LG	Yoke Mount for 100W, 150W, 200W					
FL04-YK-HG	Yoke Mount for 240W, 300W					

HEAD OFFICE: 8 - 540 Jamieson Pkwy, Cambridge, ON, N3C 0G5 | orders@csc-led.com | (519) 880 - 9833