



ANDREW'S  
RESIDENCE

Meet the Elegant

# AWP04

## Architectural Wall Packs

Colour Selectable

120-347V Universal Driver

0-10V Dimmable

Instant Start

Meet the successor to our AWP03 series Wall Packs, now power and colour selectable! Comes with built-in water drainage, UV-resistant polycarbonate refractor lens with Type II distribution and durable die-cast aluminum housing.



# AWP04 ARCHITECTURAL WALL PACKS

Ideal for building entrances, multi-use facilities, apartment buildings, institutions, schools, and more

## WHAT MAKES THE AWP04 SO GREAT!

Our AWP04 Architectural Wall Packs are an excellent choice for any outdoor project, offering reliability and versatility. They are ideal for various applications, from enhancing the visibility and security of building entrances to illuminating apartment buildings, schools, and multi-use facilities. With their sleek design and durable die-cast aluminum housing, these wall packs seamlessly blend into architectural settings while providing ample illumination and security.

Each fixture is power selectable, allowing for flexible brightness adjustments. Additionally, each fixture is colour selectable\* for customizable ambiance. Equipped with a 120-347V Universal Driver, these wall packs ensure compatibility across voltage systems. The 0-90° adjustable lamp head ensures precise aiming, while built-in water drainage and an IP65 rating ensure durability in harsh outdoor conditions.

Whether it's for security, ambiance, or functionality, the AWP04 Architectural Wall Packs offer a compelling lighting solution that you can rely on for your next project!



### Colour Selectable

3000K / 4000K / 5000K

excluding AWP04-120W-40K-4P-UD

### Power Selectable

40W, 80W, 120W

### 120-347V

Universal Driver

### Built-in Water Drainage

### Durable Die-Cast Aluminum Housing

### Standard Junction Box Mount

with facility for photocell  
(sold separately)

### Adjustable 0-90°

for precise aiming

### UV-Resistant Polycarbonate Refractor Lens

with Type II distribution



For information on the  
complete series including  
IES files, spec sheets,  
and more, visit  
[www.csc-led.com](http://www.csc-led.com)

\*excluding 120W model



Check out our **AWP04** product video on our **Youtube** channel to learn more!

## ACCESSORIES

Accessories to meet your projects every need (sold separately)



**Motion Sensor**  
HB01DMS-C



**Photocell**  
HD06VCHR



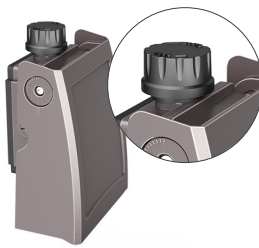
**Photocell Extension**  
HD06-TUBE



**Photocell Extension**  
MS04-RC



HD06VCHR shown on fixture with  
HD06-TUBE (sold separately)



HD06VCHR shown on fixture  
(sold separately)

## Lumen Output Tables

and Product Numbers

AWP04-40W-3CCT-4P-UD			
	3000K	4000K	5000K
10W	1712 lm	1793 lm	1838 lm
20W	3360 lm	3571 lm	3573 lm
30W	4772 lm	5136 lm	5054 lm
40W	5059 lm	6213 lm	6024 lm
AWP04-80W-3CCT-4P-UD			
	3000K	4000K	5000K
50W	6528 lm	6814 lm	6593 lm
60W	7698 lm	8091 lm	7752 lm
70W	9048 lm	9660 lm	9060 lm
80W	9966 lm	11121 lm	10844 lm
AWP04-120W-40K-4P-UD			
	4000K		
60W	9005 lm		
80W	12007 lm		
100W	15008 lm		
120W	15960 lm		







# WHY CHOOSE US AS YOUR LIGHTING PARTNER

## SAFETY IN DECISION:

We began 20 years ago in 2005, and have been wholly committed to LED lighting ever since. If you ever have an issue with our products, rest assured we'll be there to help, and will never leave you hanging! We sell **ONLY** through channel (wholesale), never direct to the end user.

## INVENTORY:

We have 3 fully loaded warehouses across Canada (ON, AB, BC). Everything at CSC LED is **QUICK SHIP!** In many cases, receive your order the next day. With an online account, view your NET cost and live inventory levels at the click of a button. A **2% discount** applies when you order online. We can ship to your branch or drop ship direct to your customer (no pricing shown on packing slips). \$250 Prepaid\* shipping on most orders.

## TECHNICAL SALES SUPPORT:

We have lighting specialists ready to assist with your selections, project designs, lighting calculations, and quotations. Our website has embedded lighting calculation tools as well as a rebate finder and ROI calculator. As always, CSC LED staff is ready to assist. **Lightning fast by industry standards!**

## WEB & WEB SUPPORT:

If you haven't seen our web portal, prepare to be amazed! Easy to navigate, easy to order, and saves you time. Our IT team has also built an API that enables your website to pull our inventory data. If your website has the capability, our stock becomes your stock, on your website, without human intervention or input. This can also include automatic pricing with your built-in margin. Once again, saving you time and increasing your selling capabilities.

## 2 MOBILE SHOWROOMS:

We have 2 mobile showrooms available for your special events and joint contractor visits. These rolling beauties are powerful sales tools that go almost anywhere. Ask your local sales agent for more information.

\* \$250 PPD shipping to all wholesale branches in Canada. Surcharge may apply for drop ship to remote locations.



## CONTRACTOR REWARDS

Beginning October 1st, 2023, CSC LED launched its Contractor Rewards Program. Your contractors can now earn points that can be used towards gift cards and other cool rewards. Who doesn't like free stuff?

Learn more by visiting  
[www.csc-led.com/rewards](http://www.csc-led.com/rewards)

### HEAD OFFICE:

8 - 540 Jamieson Pkwy,  
Cambridge, ON, N3C 0G5  
[orders@csc-led.com](mailto:orders@csc-led.com) | (519) 880 - 9833

### ALBERTA WAREHOUSE

13 - 2355 52 Ave SE,  
Calgary, AB, T2C 4X7  
[ordersbc@csc-led.com](mailto:ordersbc@csc-led.com) | (403) 907 - 0212

### BRITISH COLUMBIA OFFICE

1140 - 2375 Fremont Street,  
Port Coquitlam, BC, V3B 0N9  
[ordersbc@csc-led.com](mailto:ordersbc@csc-led.com) | (778) 730 - 0448

## Let's Go Social!



[cscledcorp](https://www.cscledcorp.com)