



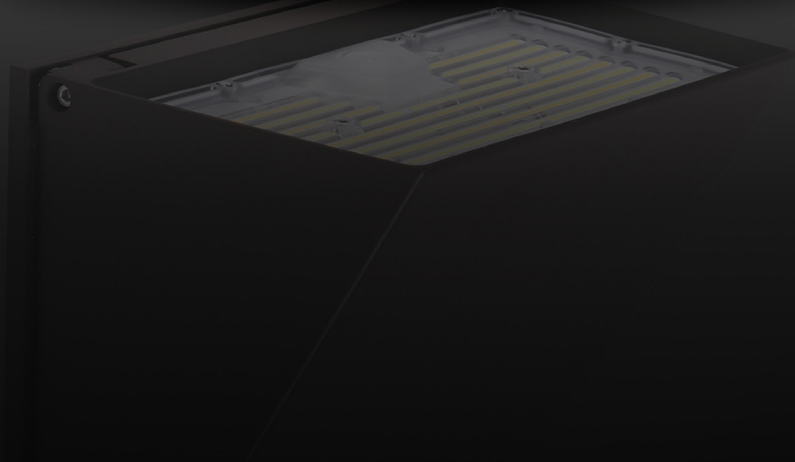
Let's Beat Light Pollution Together!

DARKSKY APPROVED PRODUCTS

when set to 3000K

We are proud to offer a range of DarkSky approved lighting solutions! Discover how light pollution impacts the environment and the importance of adopting responsible lighting practices. Make an impact and choose DarkSky approved outdoor lighting!

KEYSTONE



Certified by DarkSky.org

KEYSTONE Wall Packs

Suitable for use in commercial and industrial building projects needing a sleek, customizable luminaire that enhances building aesthetics.



Dark Sky Approved
when set to 3000K operation

Power Selectable

20W / 30W / 40W

40W / 60W / 80W

80W / 100W / 120W

120-347V Universal Driver

0-10V dimming

Available in Black (BK),
Bronze (BZ), and White (WH)

Built-in Photocell

unplug to bypass

Type II Optics Standard

Type III and Type IV

Interchangeable Optics

sold separately

Motion Sensor Compatible

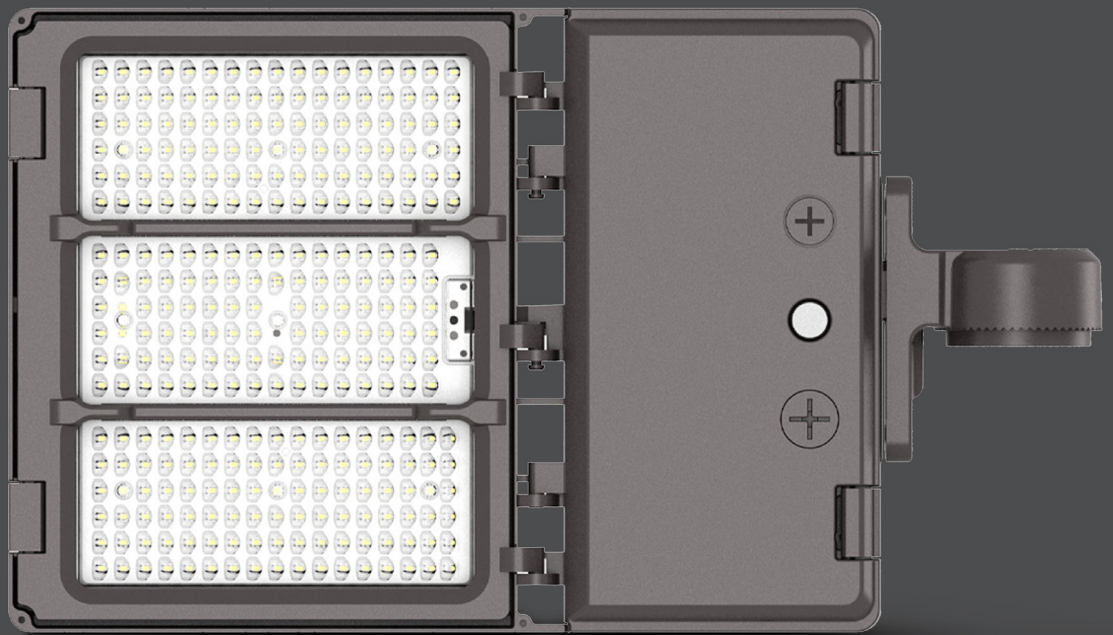
sold separately



For information on the
complete series including
IES files, spec sheets,
and more, visit
www.csc-led.com

FLEX

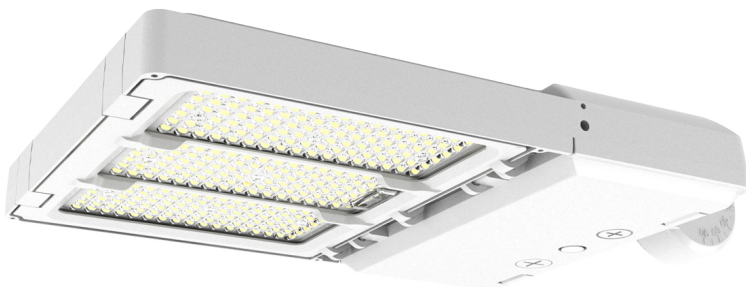
FL05 FLOOD / AREA LIGHTS



Certified by DarkSky.org

FLEX FL05 Flood / Area Lights

Flood / Area lighting has never been easier with all the features you will ever need in one sleek, attractive package. Stocked in Black, Bronze, and White for quick shipping!



Dark Sky Approved
when set to 3000K operation
and used with the Fixed Mount
(sold separately)

Power Selectable

60W / 80W / 100W
100W / 125W / 150W
180W / 210W / 240W
260W / 260W / 300W
350W / 400W / 450W

120-347V Universal Driver
0-10V dimming

Available in Black (BK),
Bronze (BZ), and White (WH)

Rugged Die Cast
Aluminum Housing

Photocell and Sensor Ready

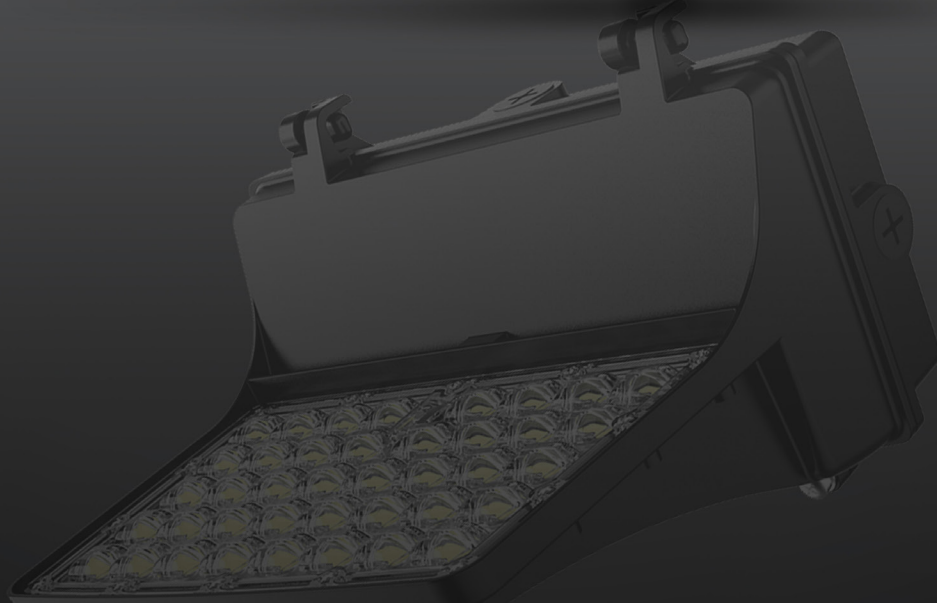
Quick and Easy
Field-Interchangeable
Optics

sold separately



For information on the
complete series including
IES files, spec sheets,
and more, visit
www.csc-led.com

WPX | WALL PACKS



Certified by DarkSky.org

WPX | WALL PACKS

Flood / Area lighting has never been easier with all the features you will ever need in one sleek, attractive package. Stocked in Black, Bronze, and White for quick shipping!

Type III Distribution Optics Standard

Type II and Type IV options available

Durable Die-Cast Aluminum Housing

Colour Selectable
3000K / 4000K / 5000K



1/2" NPT Entry
on all sides

Approved by DarkSky
when set for 3000K operation

120-347V Driver
with 6kV surge protection



Available in Black (BK)
and White (WH)



For information on the complete series including IES files, spec sheets, and more, visit www.csc-led.com

What Are The Effects From Light Pollution?

Light pollution disrupts wildlife, impacts human health, wastes money and energy, contributes to climate change, and blocks our view of the universe.

BL01 | Bollards



Certified by DarkSky.org

BL01 Bollards

Suitable for pathways, gardens, sidewalks, building entrances, and other landscapes that require low to the ground illumination.

LIGHT ENGINE



*PICTURED WITH BASE POLE
(SOLD SEPARATELY)

BL01-14W-4P-3CCT-UD



120-347V



IP65



eco



IK10
VANDAL
PROOF



Certified by DarkSky.org

- Dark Sky Approved
when set to 3000K operation
- Power Selectable 14W Maximum
25% / 50% / 75% / 100% field adjustable
- Type V Light Distribution
- Polyester Powder Coat Finish Black
- Vandal Resistant IK10

BASE POLES



BL01-BASE19



BL01-BASE35



BL01-BASE42

Choose from 19", 35", and 42" Base Poles

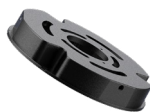
NOTE: 19", 35", or 42" Base Poles are sold separately from light engine, and are **required** for installation.

19", 35", and 42" represent **total** height of the luminaire **including Base Pole and Light Engine**

MOUNTING

WET CONCRETE INSTALLATION:

Anchor Bolts & Plate (BL01-PLATE) are **required** for wet concrete installation.



Mounting Plate
**INCLUDED WITH
BASE POLE**



Anchor Bolts & Plate
**SOLD SEPARATELY
(BL01-PLATE)**

SPILL CONTROL



Visor
**SOLD SEPARATELY
(BL01-VISOR)**



For information on the complete series including IES files, spec sheets, and more, visit www.csc-led.com

PTA02 | POLE TOP AREA LIGHTS



Certified by DarkSky.org

Pole Top Area Light

100W | 3000K | 120-347V

Elegant look and design Ideal for parking lots, pathways, parks, retail settings, and more.

Dark Sky Approved
when set to 3000K operation

Complete with Shorting Cap
Photocells sold separately

0-10V Dimmable

Polyester
Powder-Coat Finish
(Bronze)

High Efficiency Optics
with type 5 distribution

Fits Up To 2 $\frac{3}{4}$ " OD pole



For information on the complete series including IES files, spec sheets, and more, visit www.csc-led.com

What Causes Light Pollution?

Light pollution is a side effect of industrial civilization.

Its sources include building exterior and interior lighting, advertising, commercial properties, offices, factories, streetlights, and illuminated sporting venues.



DarkSky

LET'S BEAT LIGHT POLLUTION TOGETHER!

DarkSky International restores the nighttime environment and protects communities from the harmful effects of light pollution through outreach, advocacy, and conservation.

LIGHT CAN BE A POLLUTANT

Most of us are familiar with air pollution, water pollution, and land pollution, but did you know that light can also be a pollutant?

Components of light pollution include:

Glare — excessive brightness that causes visual discomfort

Sky glow — brightening of the night sky over inhabited areas

Light trespass — light falling where it is not intended or needed

Clutter — bright, confusing, and excessive groupings of light sources

WHAT IS LIGHT POLLUTION?

Light pollution is the human-made alteration of outdoor light levels from those occurring naturally.

WHAT CAN BE DONE ABOUT LIGHT POLLUTION?

Following responsible lighting practices and choosing DarkSky approved fixtures are just some of the ways light pollution can be solved. You can get involved too!

Need help? Email info@csc-led.com and our team will help you put a responsible lighting plan into action!

HEAD OFFICE:

8 - 540 Jamieson Pkwy,
Cambridge, ON, N3C 0G5
orders@csc-led.com | (519) 880 - 9833

ALBERTA WAREHOUSE

13 - 2355 52 Ave SE,
Calgary, AB, T2C 4X7
ordersbc@csc-led.com | (403) 907 - 0212

BRITISH COLUMBIA OFFICE

1140 - 2375 Fremont St,
Port Coquitlam, BC, V3B 0N9
ordersbc@csc-led.com | (778) 730 - 0448