



Commercial and Industrial LED Lighting Solutions

2025 LINE CARD



Join Our Spotted On Site Series!

Discover how our products are being put to work in real-life projects through our Spotted On Site series! We love seeing our products in action, and we truly appreciate all the photo submissions showcasing their use. If you'd like to be featured, simply send us your project photos along with the specs to marketing@csc-led.com. We can't wait to see how you're using our products!

Scan to submit
your Spotted On
Site Photos!



VT Spotted in ON



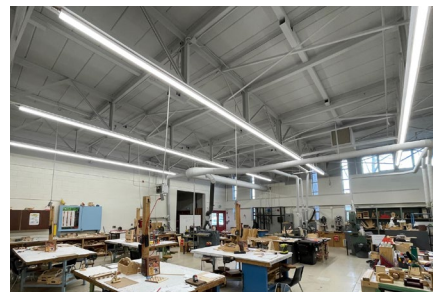
VT4-35W-3P-3CCT-UD
20W/28W/35W | 3CCT | 120-347V
2747-4977 lm

PLP Spotted in ON



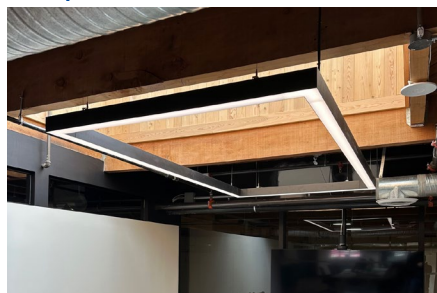
PLP22-40W-3P-3CCT-UD
2' x 2' | 20W/30W/40W | 3CCT | 120-347V
2606-5039 lm

ST Spotted in ON



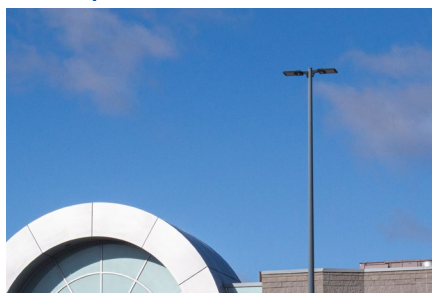
ST8B-70W-3P-3CCT-UD
50W/60W/70W | 3CCT | 120-347V
7866-10992 lm

AL Spotted in BC



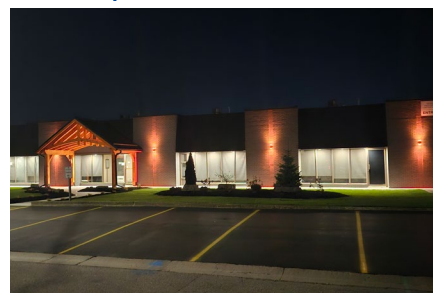
AL4-D-40W-3CCT-UD-BK
40W | 3CCT | 120-347V | Direct | 4608 lm
AL8-D-80W-3CCT-UD-BK
80W | 3CCT | 120-347V | Direct | 9263 lm

FL05 Spotted in ON



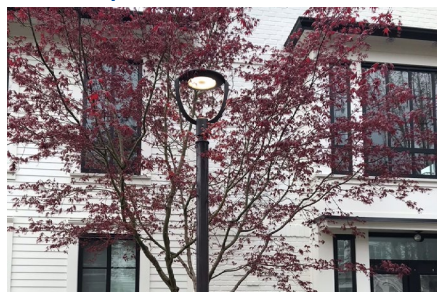
FL05-300W-3P-3CCT-UD-BK
260W/280W/300W | 3CCT | 120-347V
33987-40953 lm

WCYL Spotted in ON



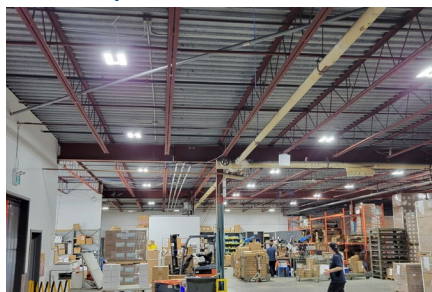
WCYL-DI-30W-RGBW-LV
30W | RGBW | 120-277V | Direct/Indirect
270-1230 lm

PTA02 Spotted in BC



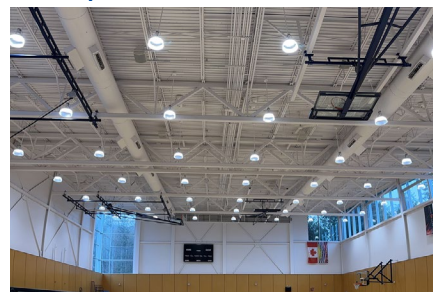
PTA02-100W-3CCT-UD
100W | 3CCT | 120-347V | 11870 lm

LHB04 Spotted in ON



LHB04-110W-3P-3CCT-UD-WH
70W/90W/110W | 3CCT | 120-347V
10318-16113 lm

HB8 Spotted in BC



HB8-240W-3P-3CCT-UD-WH
200W/220W/240W | 3CCT | 120-347V
27842-35550 lm

The information provided in our print catalogues and on our website have been gathered and assembled with every effort made to verify the accuracy of the content; however, mistakes can happen. The information in this document is subject to change without notice.

Contractors: Please contact your preferred electrical wholesaler for more information and to place your order
If you have any questions or comments, please reach out to us at marketing@csc-led.com

TABLE OF CONTENTS

Contents

| | |
|-------------------|---------|
| Distributor Perks | Page 4 |
| Rewards Program | Page 5 |
| DarkSky | Page 29 |
| Clearance | Page 30 |
| Sales Agents | Page 31 |

Product Type

| | |
|-------------------|---------|
| Area Lights | Page 6 |
| Flood Lights | Page 8 |
| Sports Lighting | Page 10 |
| Post Tops | Page 11 |
| Bollards | Page 11 |
| Pole Accessories | Page 12 |
| Linears | Page 13 |
| Wall Cylinders | Page 16 |
| Cylinders | Page 17 |
| High Bays | Page 18 |
| Canopy & Garage | Page 21 |
| Panels & Troffers | Page 22 |
| Wall Packs | Page 24 |
| Wall Sconces | Page 26 |
| Vapour Proofs | Page 27 |
| Security Lights | Page 27 |
| Explosion Proof | Page 27 |
| Work Lights | Page 27 |
| Amber Optics | Page 28 |

ABOUT US

CSC LED (formerly Earth-Line SSL) has been in the LED industry since 2005, delivering affordable and reliable LED products built with top-tier components, such as premium chips, drivers, and thermal management.

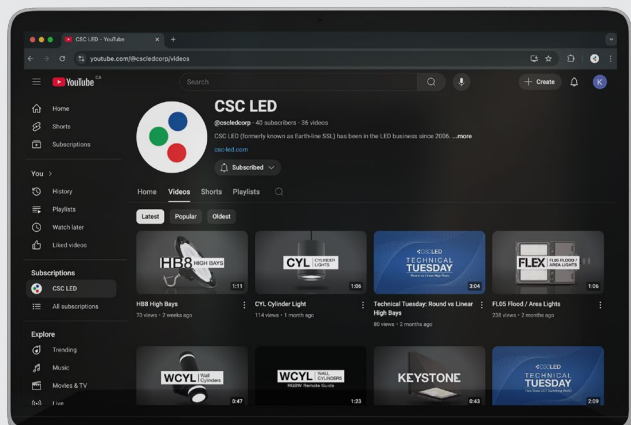
Why Choose Our Products?

- Tier 1 quality at competitive prices.
- Our products use premium materials and finishes used in higher-priced products in the marketplace.

High-quality products, competitive pricing, and exceptional service—that's CSC LED.

What Sets Us Apart?

- Deep industry knowledge: Our diverse team understands the needs of distributors, electricians, contractors, and more.
- Customer-first approach: We prioritize strong partnerships with tools like 24/7 online pricing and inventory access.
- Proven reliability: With 20+ years in business, we've outlasted our warranties—something few competitors can claim.



Scan to Visit
our Channel!



CHECK OUT Our Youtube Channel

Explore our Youtube channel where you'll discover an array of informational content, including insightful product videos, unboxing experiences, an exclusive peek into our state-of-the-art Mobile Showroom, and much more!

CALLING ALL DISTRIBUTORS

Sign up for an account on our
Online Distributor Portal

DISTRIBUTOR PORTAL PERKS



FREE nationwide shipping
on all orders over \$250**



Place your orders from
anywhere, at any time,
on any device



Receive a **2% discount** on
every order placed through
our online portal



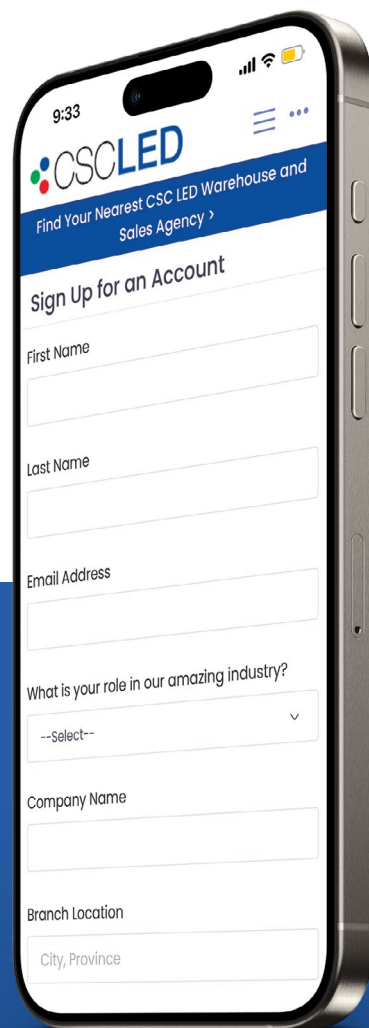
View order details, tracking
numbers, previous orders,
and more



View **live inventory counts**
in all 3 of our warehouses,
including incoming shipment
ETAs and branch transfers



Scan to sign up!



DON'T HAVE AN ACCOUNT?

Signing up is quick and easy!

- 1 Visit www.csc-led.com
- 2 Click "Sign Up" in the top right corner
- 3 Receive your approval email from our team within 1 business day

CALLING ALL CONTRACTORS

YET ANOTHER REASON TO CHOOSE CSC LED

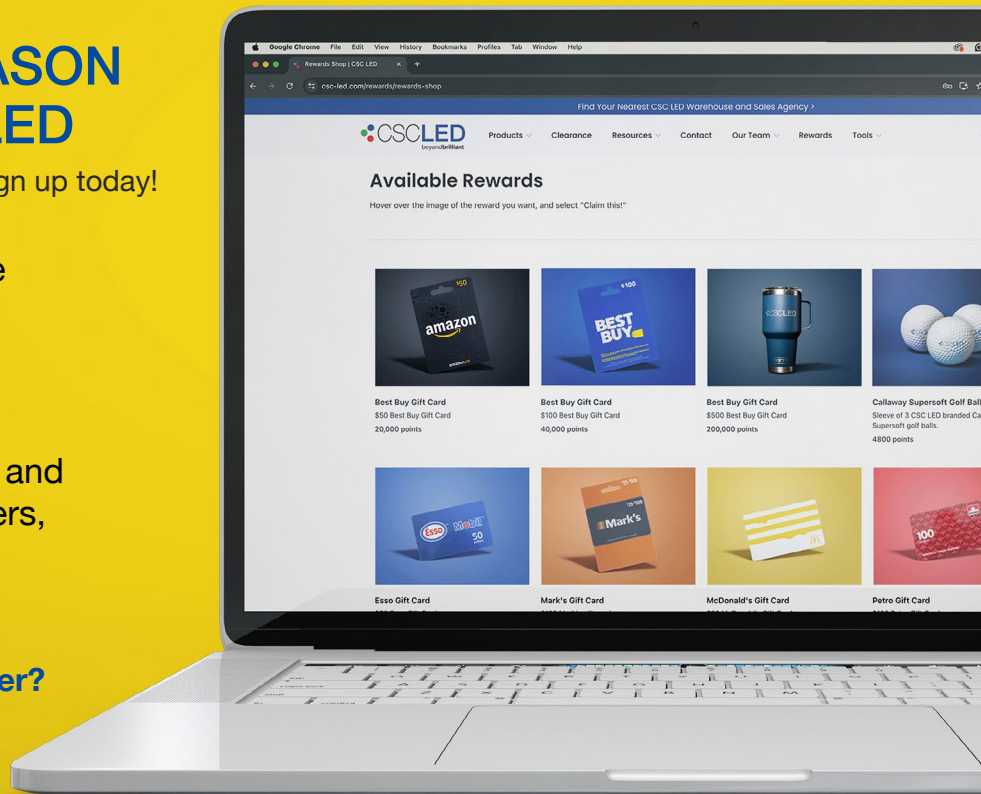
Visit www.csc-led.com/rewards to sign up today!

Earn points when you purchase CSC LED products from your preferred electrical wholesaler.

Use your points for awesome rewards items like Tim Hortons and Amazon Gift Cards, Yeti Tumblers, Callaway Golf Balls, and more!



Not a Rewards Member?
Joining is free and easy!



Upload Packing Slip

Upload a picture of your packing slip or invoice to your Rewards online account.



Earn Points

Automatically earn points on all CSC LED products you purchase.



Gain Rewards

Redeem your points for gift cards, Yeti tumblers, Roots hoodies, and more!

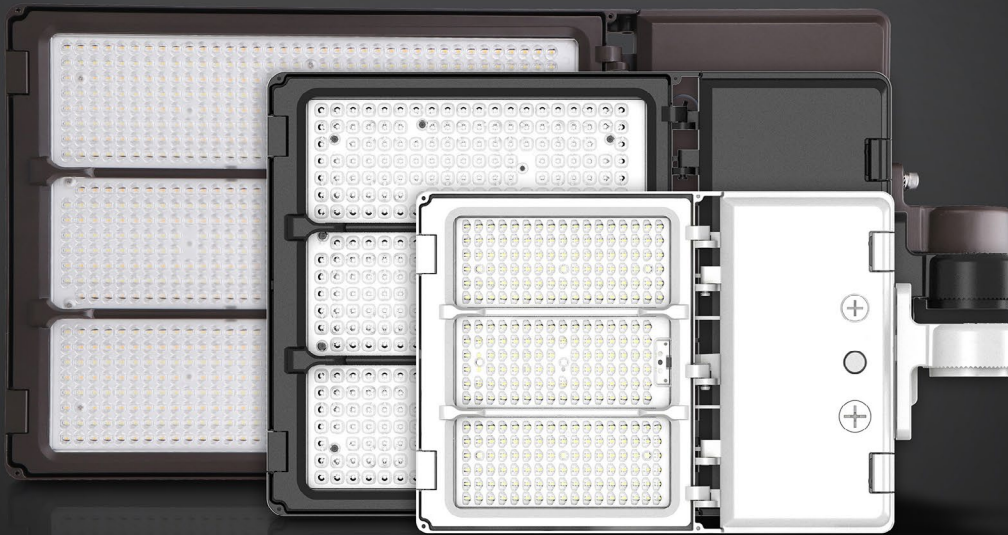
Register with **CODE: LINECARD2025** for 5000 bonus points!

FLEX

FL05 AREA LIGHTS

The FL05 Flex series Area Lights from CSC LED offer easy installation with quick-release latches and field-interchangeable optics. Adjust power, colour temperature, voltage, and benefit from 0-10V dimming for flexible configurations—no special orders needed.

Enjoy long-term flexibility with post-installation adjustments to suit your lighting needs, ensuring optimal performance in any setting.



| Fixtures | Wattage | CCT | Voltage | Lumens | Finish |
|---|--------------------|-----------------|----------|----------------|--------------------------|
| FL05-100W-3P-3CCT-UD-BZ FL05-100W-3P-3CCT-UD-BK | 60W / 80W / 100W | 30K / 40K / 50K | 120-347V | 8825-14865 lm | Bronze Black |
| FL05-150W-3P-3CCT-UD-BZ FL05-150W-3P-3CCT-UD-BK FL05-150W-3P-3CCT-UD-WH | 100W / 125W / 150W | 30K / 40K / 50K | 120-347V | 13838-20618 lm | Bronze Black White |
| FL05-240W-3P-3CCT-UD-BZ FL05-240W-3P-3CCT-UD-BK | 180W / 210W / 240W | 30K / 40K / 50K | 120-347V | 25604-34576 lm | Bronze Black |
| FL05-300W-3P-3CCT-UD-BZ FL05-300W-3P-3CCT-UD-BK FL05-300W-3P-3CCT-UD-WH | 260W / 280W / 300W | 30K / 40K / 50K | 120-347V | 33987-40953 lm | Bronze Black White |
| FL05-450W-3P-3CCT-UD-BZ | 350W / 400W / 450W | 30K / 40K / 50K | 120-347V | 44114-61020 lm | Bronze |

Choose your Mount!
Available in Bronze, Black
and White (sold separately)



Fixed Mount



Multi Mount



Pole Mount



Trunnion Mount



Slip Fitter



Yoke Mount



KEY FEATURES

This series features quick-release latched doors for easy access to the driver housing and lens frame, as well as quick, field-interchangeable optics. For added versatility, an optional visor (sold separately) is available with two installation options. Additionally, the fixture is compatible with motion sensors and photocells (sold separately), boosting both functionality and efficiency!



MOUNTING OPTIONS

Our FL05 mounts are sold separately to reduce excess waste, simplify storage and shipping, and save you money, ensuring you never pay for a mount you won't use! The FL05 is DarkSky Approved when set to 3000K operation and paired with the Fixed Mount (sold separately).

FUSION

FLOOD LIGHTS

Easily optimize lighting on-site with built-in switches that adjust beam angle, wattage, and CCT, no special tools needed. Designed for flexibility and fast setup, this durable, IK07 and IP65-rated luminaire is ideal for large outdoor areas like parking lots, building exteriors, and sports fields. It offers three beam distributions (5H5V, 6H6V, 7H6V), a built-in photocell, multiple mounting options, and comes in sleek black or bronze finishes with optional pole accessories for versatile installation.



| Fixtures | Wattage | CCT | Voltage | Lumens | Finish |
|--|--------------------|-----------------|----------|----------------|-----------------|
| FLF-80W-3P-3CCT-3B-UD-BZ FLF-80W-3P-3CCT-3B-UD-BK | 40W / 60W / 80W | 30K / 40K / 50K | 120-347V | 7060-11243 lm | Bronze Black |
| FLF-150W-3P-3CCT-3B-UD-BZ FLF-150W-3P-3CCT-3B-UD-BK | 100W / 125W / 150W | 30K / 40K / 50K | 120-347V | 15167-21936 lm | Bronze Black |
| FLF-300W-3P-3CCT-3B-UD-BZ FLF-300W-3P-3CCT-3B-UD-BK | 200W / 250W / 300W | 30K / 40K / 50K | 120-347V | 29696-46413 lm | Bronze Black |

Choose your Mount!
Available in Bronze and Black
(sold separately)



Fixed Mount



Multi Mount



Pole Mount



Knuckle Mount



Slip Fitter



Yoke Mount



EFFORTLESS ADJUSTMENTS

Effortlessly configure output settings on-site with simple, built-in switches that let you modify beam angle, wattage, and CCT to meet the specific needs of any application. Designed for quick, hassle-free adjustments without the need for special tools, it streamlines setup and enhances project flexibility.

MOUNTING MADE EASY

Choose from a variety of mounting options sold separately to minimize waste, reduce storage and shipping needs, and save you money. Customize even further with pole accessories like our 2-head or 3-head bullhorns. Note: Slip Fitter is required and sold separately for use with pole accessories.

FLOOD LIGHTS

Scan to view all
Flood Lights!



FLM02 Series

MINI FLOOD LIGHTS

Our FLM02 Mini Flood Lights offer unmatched versatility and performance. With power and 3CCT selectability (excluding the 15W model), they provide customizable illumination for any outdoor space. Featuring a built-in photocell, these lights ensure hassle-free, automated operation from dusk till dawn.



| | |
|-----------------|---|
| Wattage | 15W*, Selectable (20W/30W/50W), (55W/70W/80W) |
| CCT | 40K*, Selectable (30K/40K/50K) |
| Voltage | 120-277V*, 120-347V |
| Lumens | 1856-11270 lm |
| DLC | Premium |
| Finish | Bronze |
| Warranty | 10 Years |

SPORTS LIGHTING

SP01B Series

SPORTS STADIUM LIGHTS

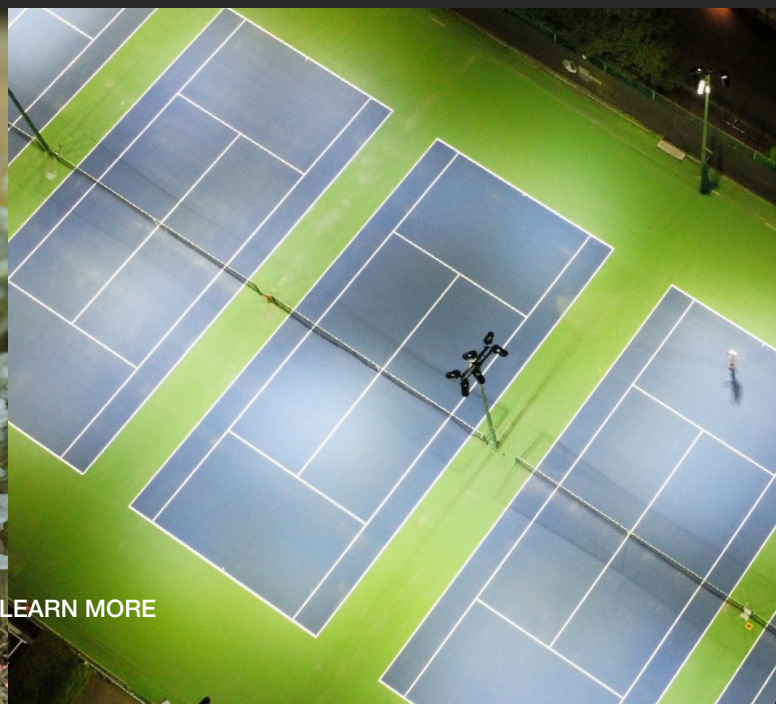
High-efficiency indoor and outdoor lighting designed for recreational facilities, including stadiums, shipyards, airports, and high-mast applications. Interchangeable optics are available and sold separately. Equipped with 10kV surge protection, it ensures reliable, long-lasting performance in demanding environments.



Scan for full
Series details!



| | |
|-----------------|----------|
| Wattage | 500W |
| CCT | 50K |
| Voltage | 120-347V |
| Lumens | 69937 lm |
| DLC | Premium |
| Finish | Black |
| Warranty | 5 Years |



10

*SELECT PRODUCTS ONLY. VISIT OUR WEBSITE TO LEARN MORE

*Availability subject to change

POST TOPS

Scan for
full series
details!



PTA02 Series

POLE TOP AREA LIGHTS

Where elegance meets performance—designed for poles up to 2.75" OD. Equipped with high-efficiency Type V Optics, this series delivers wide, uniform lighting ideal for parking lots, pathways, parks, and retail settings. Complete with a photocell receptacle for quick and easy photocell installation (photocell sold separately).



| | |
|----------------|--------------------------------|
| Wattage | 35W, 55W, 75W, 100W, 150W |
| CCT | Selectable (30K/40K/50K) |
| Voltage | 120-347V |
| Lumens | 4340-18747 lm |
| Certifications | DLC Premium, DarkSky Approved* |
| Finish | Bronze |
| Warranty | 10 Years |

BOLLARDS

Scan for
full series
details!



BL01 Series

BOLLARDS

Elevate your outdoor spaces with our sleek Bollards. Transform pathways, gardens, sidewalks, building entrances, and other landscapes that require ambient illumination. Choose from 19", 35", and 42" Base Pole heights to perfectly complement your space and create a welcoming atmosphere.



| | |
|----------------|---|
| Wattage | Selectable (14W Maximum, 25% / 50% / 75% / 100% field adjustable) |
| CCT | Selectable (30K/40K/50K) |
| Voltage | 120-347V |
| Lumens | 1680 lm |
| Certifications | DarkSky Approved |
| Finish | Black |
| Warranty | 10 Years |



POLE ACCESSORIES

All models are available in black and bronze finishes to seamlessly match a variety of environments and design preferences.

Maximize versatility and reduce installation costs with our innovative pole accessories. Designed to complement existing infrastructure, these accessories provide flexible mounting options, eliminating the need to remove or replace current poles, making retrofits easier and more cost-effective.



| Bullhorns | # of Heads | Orientation | Finish |
|----------------------------|------------|-------------|-----------------|
| PA-BH-I2-BZ PA-BH-I2-BK | 2 Heads | Inline | Bronze Black |
| PA-BH-I3-BZ PA-BH-I3-BK | 3 Heads | Inline | Bronze Black |

- Slip Fitter is sold separately and is required for use
- Available in Bronze and Black



Inline
2-head



Inline
3-head



Round
3", 4", or 5" to 2 3/8"



Square
4" or 5" to 2 3/8"

| Tenons | Shape | Size | Finish |
|----------------------------|--------|-------------|-----------------|
| PA-TA-R3-BZ PA-TA-R3-BK | Round | 3" - 2 3/8" | Bronze Black |
| PA-TA-R4-BZ PA-TA-R4-BK | Round | 4" - 2 3/8" | Bronze Black |
| PA-TA-R5-BZ PA-TA-R5-BK | Round | 5" - 2 3/8" | Bronze Black |
| PA-TA-S4-BZ PA-TA-S4-BK | Square | 4" - 2 3/8" | Bronze Black |
| PA-TA-S5-BZ PA-TA-S5-BK | Square | 5" - 2 3/8" | Bronze Black |



LINEARS

Scan to view all Linears!



AL Series

ARCHITECTURAL LINEAR STRIPS

Elevate your space by creating your own custom lighting design. Available in direct and direct/indirect models.



| | |
|-----------------|--------------------------|
| Wattage | 20W, 40W, 80W |
| CCT | Selectable (30K/35K/40K) |
| Voltage | 120-347V |
| Lumens | 2100-9263 lm |
| Length | 2', 4', 8' |
| Finish | White, Black |
| Warranty | 5 Years |

WR2 Series



WRAP FIXTURE

CSC LED's most versatile wrap fixture that meets or exceeds all commercial specifications.

| | |
|-----------------|-----------------------------|
| Wattage | Selectable (20W/28W/35W) |
| CCT | Selectable (35K/40K/50K) |
| Voltage | 120-347V |
| Lumens | 2823 - 4989 lm |
| DLC | Standard |
| Finish | White |
| Warranty | 5 Years |

AL Backlit Connectors
Available in Black
and White
(sold separately)



ST | STRIP LIGHTS

Our best selling ST series Strip Lights come in 2', 4', and 8' lengths crafted from high-quality materials for effortless installation and exceptional value. Our Strips come surface mount ready, with optional suspension kits sold separately. Thanks to the use of aircraft cables, the lens cover remains attached to the fixture during wiring, eliminating the need to place the cover elsewhere, streamlining the installation process.



Select 4' Models Complete With a Built-in Motion Sensor!

| Fixtures | Wattage | CCT | Voltage | Lumens | Length | Finish |
|--|--------------|-------------|----------|---------------|--------|--------|
| ST2B-20W-3CCT-UD | 20W | 35K/40K/50K | 120-347V | 2805-2903 lm | 2' | White |
| ST4B-40W-3P-3CCT-UD ST4B-40W-3P-3CCT-UD-MS02-MW | 20W/30W/40W | 35K/40K/50K | 120-347V | 2908-5521 lm | 4' | White |
| ST4B-50W-3P-3CCT-UD ST4B-50W-3P-3CCT-UD-MS02-MW | 30W/40W/50W | 35K/40K/50K | 120-347V | 4740-7850 lm | 4' | White |
| ST8B-70W-3P-3CCT-UD | 50W/60W/70W | 35K/40K/50K | 120-347V | 7866-10992 lm | 8' | White |
| ST8B-100W-3P-3CCT-UD | 60W/80W/100W | 35K/40K/50K | 120-347V | 9480-15700 lm | 8' | White |





STREAMLINE YOUR SPACE

Our ST series Strips are the perfect choice to enhance the visibility and functionality of cove areas, general lighting applications, shops, parking garages, and more! Plus, for increased time savings, select 4' models (ending in -MS02-MW) come complete with a preinstalled microwave motion sensor.

PLUG & PLAY ROW MOUNTING

Enjoy effortless and hassle-free row mounting. With simple plug-and-play functionality, our quick-connect accessories make installation a breeze, saving both time and effort. Sold separately, our row mount kit offers a convenient and efficient way to set up your lighting system with minimal complexity.

WCYL | WALL CYLINDERS

With a sleek design and customizable features, this series elevates any space with dynamic lighting effects and a bright, energy-efficient performance. Combining style and functionality, this series enhances the ambiance and utility of your environment. Choose from 3CCT or RGBW* models to suit the needs of your specific project. Select models complete with a built-in Photocell*.



| Fixtures | Wattage | CCT | Voltage | Distribution | Lumens | Finish |
|------------------------|-------------|-------------|----------|-----------------|-------------|--------|
| WCYL-D-15W-3P-3CCT-UD | 7W/10W/15W | 30K/40K/50K | 120-347V | Direct | 739-1497 lm | Black |
| WCYL-DI-30W-3P-3CCT-UD | 10W/20W/30W | 30K/40K/50K | 120-347V | Direct/Indirect | 913-3203 lm | Black |
| WCYL-DI-30W-RGBW-LV | 30W | RGBW | 120-277V | Direct/Indirect | 270-1230 lm | Black |

VERSATILE APPLICATION

Whether enhancing outdoor landscapes or elevating indoor ambiance in lobbies, hallways, or conference rooms, our WCYL Wall Cylinders offer unmatched customization, making them an indispensable choice for lighting designers and architects alike!

FUNCTIONALITY MEETS ELEGANCE

Say goodbye to choosing between functionality and style! This versatile series combines practical lighting with a sleek, contemporary design, making it the perfect option for those seeking to enhance their space with both efficiency and elegance.

CYL | CYLINDERS

Experience unparalleled versatility with our fully configurable CYL Cylinders! This series is power and 4CCT selectable, featuring a 120-347V universal driver and 0-10V dimming. Engineered with precision and innovation in mind, this series allows for easy adjustments after installation is complete to meet the evolving needs of your space.



| Fixtures | Wattage | CCT | Voltage | Beam Angle | Lumens | Finish |
|-----------------------|-------------|-----------------|----------|-----------------|--------------|--------|
| CYL-35W-3P-4CCT-UD-BK | 21W/28W/35W | 27K/30K/35K/40K | 120-347V | 30°/40°/50°/60° | 2370-3476 lm | Black |
| CYL-35W-3P-4CCT-UD-WH | 21W/28W/35W | 27K/30K/35K/40K | 120-347V | 30°/40°/50°/60° | 2370-3476 lm | White |

MOUNTING OPTIONS

Our CYL Cylinders come ready for surface mounting with optional pendant mount kits sold separately. Our pendant mount kits are offered in Black and White, and complete with a 63" coloured power cord to match.

TOOLLESS BEAM ANGLE ADJUSTMENTS

Our innovative twist-and-lock mechanism allows for quick and easy beam angle selection, even after installation is complete. Select from 30°, 40°, 50°, or 60° to achieve the perfect lighting for any project!

HB8 HIGH BAYS

Our HB8 High Bays offer powerful performance in a compact design, featuring durable die-cast aluminum housing, a polycarbonate lens, and top-rated NEMA 4X, NSF, IP65, and DLC Premium certifications.

This best-selling series offers power and 3CCT selectability, along with shatterproof interchangeable optics, a 65" power cord, and a motion sensor receptacle. Plus, choose from a wide range of accessories sold separately, allowing for even more flexibility!



| Fixtures | Wattage | CCT | Voltage | Lumens | Finish |
|------------------------|--------------------|-----------------|----------|----------------|--------|
| HB8-100W-3P-3CCT-UD | 60W / 80W / 100W | 30K / 40K / 50K | 120-347V | 9172-14672 lm | Black |
| HB8-150W-3P-3CCT-UD | 100W / 120W / 150W | 30K / 40K / 50K | 120-347V | 15036-21828 lm | Black |
| HB8-150W-3P-3CCT-UD-WH | | | | | White |
| HB8-240W-3P-3CCT-UD | 200W / 220W / 240W | 30K / 40K / 50K | 120-347V | 27842-35550 lm | Black |
| HB8-240W-3P-3CCT-UD-WH | | | | | White |
| HB8-300W-3P-3CCT-LV | 240W / 270W / 300W | 30K / 40K / 50K | 120-277V | 32425-46362 lm | Black |
| HB8-300W-3P-3CCT-HV | 240W / 270W / 300W | 30K / 40K / 50K | 277-480V | 36414-46098 lm | Black |

A variety of
accessories sold
separately



Motion
Sensors



60° & 120°
Optics



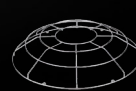
Aluminum
Reflector



Frosted
Lens



Polycarbonate
Reflector



Wire
Guard



Emergency LED
Driver



INDUSTRIAL & MANUFACTURING

Optimized for warehouses, factories, and food processing facilities, providing uniform lighting that minimizes shadows and enhances visibility over large areas. With energy-efficient LEDs and a durable design, it reduces operating costs and maintenance, boosting both safety and productivity.

COMMERCIAL, PUBLIC & COMMUNITY BUILDINGS

Perfect for gyms, retail stores, and community halls, delivering bright, even illumination that improves visibility and creates a welcoming atmosphere. Its energy efficiency cuts utility costs, while its long lifespan ensures minimal maintenance, making it an ideal choice for high-traffic spaces.

LHB04 | LINEAR HIGH BAYS

Elevate your lighting with this high-performance, compact Linear High Bay. Designed with high-impact, shatterproof polycarbonate optics, it exceeds DLC 5.1 glare standards and offers both narrow and wide distribution options. This series delivers exceptional light quality, brightness, and long lasting durability all at an affordable price point.



| Fixtures | Wattage | CCT | Voltage | Lumens | Finish |
|--------------------------|--------------------|-----------------|----------|----------------|--------|
| LHB04-110W-3P-3CCT-UD-WH | 70W / 90W / 110W | 35K / 40K / 50K | 120-347V | 10318-16113 lm | White |
| LHB04-150W-3P-3CCT-UD-WH | 110W / 130W / 150W | 35K / 40K / 50K | 120-347V | 15437-21483 lm | White |
| LHB04-220W-3P-3CCT-UD-WH | 180W / 200W / 220W | 35K / 40K / 50K | 120-347V | 25609-32020 lm | White |
| LHB04-295W-3P-3CCT-UD-WH | 255W / 275W / 295W | 35K / 40K / 50K | 120-347V | 38345-46571 lm | White |

OPTIONAL ACCESSORIES

In addition to power and 3CCT selectability, our wide range of accessories allows for further customization! Choose from wire guards, motion sensors, 65° and 110° interchangeable optics, pendant and surface mount kits, and more, sold separately.

FEATURE FOCUSED

Engineered for durability and versatility, this compact Linear High Bay features die-cast aluminum housing and a polycarbonate lens for superior protection. This series is an energy efficient replacement for traditional fluorescent fixtures and HID high bays, ideal for warehouses, factories, workshops, and more!

CANOPY & GARAGE

Scan to view all
Canopy & Garage
Lights details!



GCL01 Series



GARAGE CANOPY LIGHTS

Horizontal light dispersion for maximum uniform coverage. Optional motion sensor available (sold separately).

Wattage 45W, 75W

CCT 40K

Voltage 120-347V

Lumens 5958-9558 lm

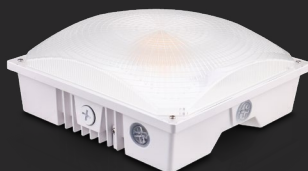
DLC Premium

Beam 170°

Finish White

Warranty 5 Years

CP03 Series



CANOPY LIGHTS

Power and 3CCT selectable with a dropped lens for improved beam angle.

Wattage Selectable
(20W/30W/40W),
(40W/60W/75W)

CCT Selectable
(30K/40K/50K)

Voltage 120-347V

Lumens 2892-9414 lm

DLC Premium

Beam 110°

Finish White

Warranty 5 Years

See what our
customers are
saying about us!

"Great products with
excellent reliability"

- June 2025 Review

★★★★★

"Pricing is competitive
across the industry"

- June 2025 Review

★★★★★

"Easy to navigate website and
it's simple to find material"

- June 2025 Review

★★★★★

"Every time I need help, I am
assisted by someone with
experience and knowledge"

- May 2025 Review

★★★★★

PANELS / TROFFERS

Scan for full series details!



VOL Series



VOLUMETRIC TROFFERS

Ideal for commercial lighting areas
such as offices, retail spaces, hallways,
healthcare applications, and more. Rigid
steel frame mounts to any T-Bar ceiling.



| Wattage | CCT | Voltage | Lumens | Size | Finish | Warranty |
|--|-----------------------------|----------|--------------|--------------------|--------|----------|
| Selectable (20W/30W/40W), (30W/35W/40W) | Selectable (30K/35K/40K) | 120-347V | 2760-5190 lm | 2' x 2' 2' x 4' | White | 5 Years |

PLP / PLS | PANEL LIGHTS

High-performance, lightweight luminaires offering versatile installation options, including lay-in, surface, or suspension mounting. With power and 3CCT selectability, our panels allow for easy configuration. 0-10V dimming capability and dual leads on both sides of the driver Junction Box offer additional flexibility. Plus, waffle stamping on the back of the Panels improves heat dissipation, enhancing the lifespan of the driver and fixture itself.



| Fixtures | Wattage | CCT | Voltage | Size | Lumens | Finish |
|--|-----------------|------------------------------------|----------|---------|------------------------------|--------|
| PLP14-40W-3P-3CCT-UD PLS14-40W-3P-3CCT-UD | 20W / 30W / 40W | 30K / 35K / 40K 35K / 40K / 50K | 120-347V | 1' x 4' | 2844-5203 lm 2646-4697 lm | White |
| PLP22-40W-3P-3CCT-UD PLS22-40W-3P-3CCT-UD | 20W / 30W / 40W | 30K / 35K / 40K 35K / 40K / 50K | 120-347V | 2' x 2' | 2606-5039 lm 2656-4678 lm | White |
| PLP24-50W-3P-3CCT-UD PLS24-50W-3P-3CCT-UD | 30W / 40W / 50W | 30K / 35K / 40K 35K / 40K / 50K | 120-347V | 2' x 4' | 3918-6478 lm 3819-5656 lm | White |

HEALTHCARE FACILITIES

Our PLS and PLP series Panels offer bright, glare-free illumination, reducing eye strain for medical professionals, making them ideal for hospitals, clinics, and labs where both performance and savings are important.

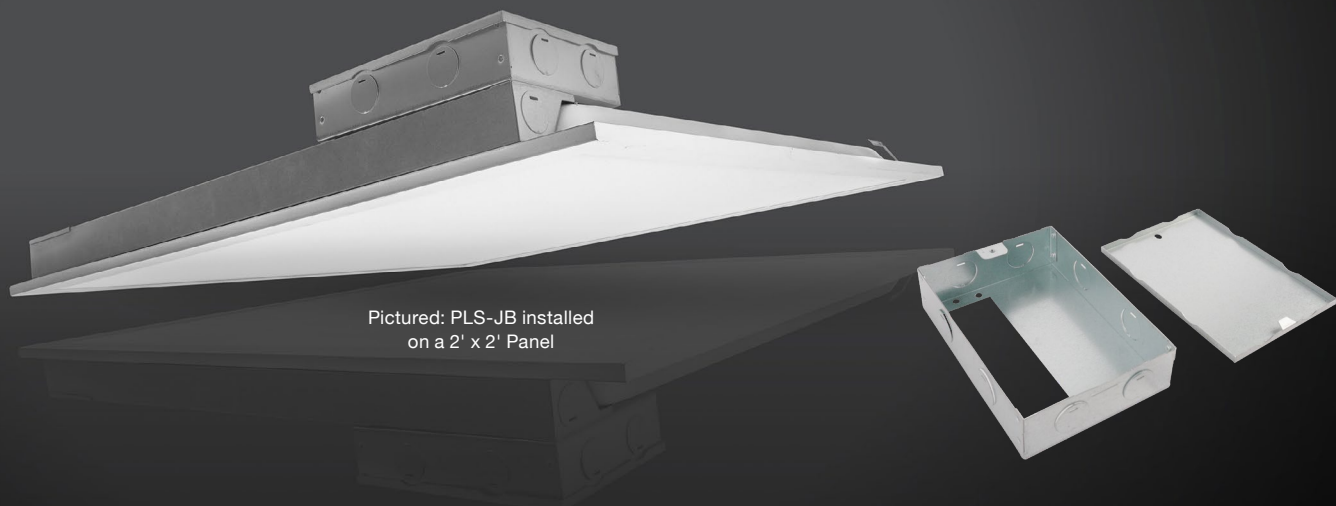
SCHOOLS & OFFICES

Lighting plays a key role in promoting concentration and well-being. Panels help reduce eye strain, making them perfect for classrooms, meeting rooms, and open office spaces where focus is required. Panel lights contribute to a brighter, more productive atmosphere.

JUNCTION BOX

Our optional Junction Box (PLS-JB) provides an additional 424 cm³ (25.5 in³) of volume for wiring and features 8 extra knockouts for line or low voltage connections.

Designed for quick and easy installation, only requiring 2 screws! Tested and approved by cETL, the PLS-JB is specifically certified for use with CSC LED PLS and PLP series Panels and must be used exclusively with these products to maintain listing compliance.



Pictured: PLS-JB installed
on a 2' x 2' Panel

RETAIL & SUPERMARKETS

Enhance retail spaces by offering bright, uniform lighting that highlights products and eliminates shadows. Each fixture is 3CCT allowing for on-site adjustments tailored to specific project conditions in order to create the most flattering light output.

WAREHOUSES & INDUSTRIAL SPACES

Where safety and visibility are paramount, our panels provide both. Powerful, uniform lighting ensures that large areas are well-lit without creating dark spots or harsh shadows. This is crucial for workers navigating expansive floors or operating heavy machinery.

KEYSTONE

Where sleek design meets superior performance. Our modern, energy-efficient Keystone Wall Packs offer power and 3CCT selectability, a built-in photocell, and motion sensor compatibility for total control and flexibility.



| Fixtures | Wattage | CCT | Voltage | Beam Type | Lumens | Finish |
|--|---------------|-------------|----------|-----------|----------------|--------------------------|
| KWP-40W-3P-3CCT-UD-BZ KWP-40W-3P-3CCT-UD-WH KWP-40W-3P-3CCT-UD-BK | 20W/30W/40W | 30K/40K/50K | 120-347V | Type II | 3649-6600 lm | Bronze White Black |
| KWP-80W-3P-3CCT-UD-BZ KWP-80W-3P-3CCT-UD-WH KWP-80W-3P-3CCT-UD-BK | 40W/60W/80W | 30K/40K/50K | 120-347V | Type II | 7650-14212 lm | Bronze White Black |
| KWP-120W-3P-3CCT-UD-BZ KWP-120W-3P-3CCT-UD-WH KWP-120W-3P-3CCT-UD-BK | 80W/100W/120W | 30K/40K/50K | 120-347V | Type II | 14671-20914 lm | Bronze White Black |

OPTIONAL BACKPLATE

Retrofitting is simple with our Keystone Wall Packs. Our backplate includes 4 x 1/2" knockouts for flexible conduit entry, allowing for clean wiring without a junction box. Its larger footprint covers most old installations, no repainting or adjustments needed!

FUNCTION MEETS DESIGN

Designed to complement any outdoor environment with their sleek and modern aesthetic, all models are available in Black, White, and Bronze finishes. Our Keystone Wall Packs blend in seamlessly with a variety of building styles while providing bright, energy-efficient illumination.



Scan to view all Wall Packs!



CWPS Series

SLIM CLASSIC WALL PACKS

This budget friendly, slim fixture is the perfect choice for a wide range of outdoor lighting applications. Its large footprint easily replaces old legacy wall packs. It's durable, easy to install, and designed with a modern twist, offering reliable illumination without compromising on style or functionality.



| | |
|-----------------|--|
| Wattage | Selectable (20W/30W/40W), (40W/60W/80W), (80W/100W/120W) |
| CCT | Selectable (30K/40K/50K) |
| Voltage | 120-347V |
| Lumens | 2986-16420 lm |
| DLC | Premium |
| Finish | Bronze |
| Warranty | 10 Years |

MWP04 Series

MINI WALL PACKS

Perfect for landscaping, patio, security lighting, and building facades, a perfect replacement for quartz halogen fixtures. Featuring a built-in Photocell for dusk-to-dawn operation, with a durable polycarbonate lens, aluminum housing, and cooling fins for long-lasting performance.



| | |
|-----------------|--------------------------|
| Wattage | Selectable (10W/15W/20W) |
| CCT | Selectable (30K/40K/50K) |
| Voltage | 120-347V |
| Lumens | 1322-2749 lm |
| DLC | Premium |
| Finish | Bronze, Black |
| Warranty | 10 Years |

WALL PACKS

Scan to view all Wall Packs!

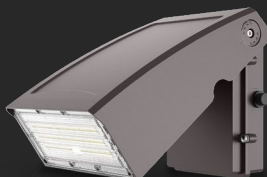


WALL SCONCES

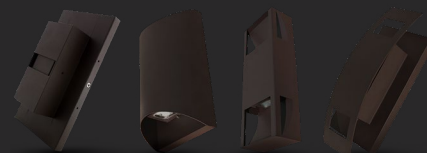
CWP05 Series



AWP04 Series



DWS Series



CLASSIC WALL PACKS

Now with power selectability! Ideal for any outdoor general purpose lighting.

| | |
|-----------------|---|
| Wattage | Selectable (20W/30W/40W), (30W/40W/60W), (45W/60W/80W), (80W/100W/120W) |
| CCT | Selectable (30K/40K/50K) |
| Voltage | 120-347V |
| Lumens | 3054-17966 lm |
| DLC | Premium |
| Finish | Bronze |
| Warranty | 10 Years |

ARCHITECTURAL WALL PACKS

Ideal for building entrances, multi-use facilities, apartments, schools, and more.

| | |
|-----------------|---|
| Wattage | Selectable (10W/20W/30W/40W), (50W/60W/70W/80W), (60W/80W/100W/120W)* |
| CCT | 40K*, Selectable (30K/40K/50K) |
| Voltage | 120-347V |
| Lumens | 1712-15960 lm |
| DLC | Premium |
| Finish | Bronze |
| Warranty | 10 Years |

DECORATIVE WALL SCONCES

3 covers available, suitable for indoor or outdoor applications.

| | |
|-----------------|---------------|
| Wattage | 15W |
| CCT | 30K, 40K |
| Voltage | 120-277V |
| Lumens | 1300 lm |
| Finish | Bronze, Black |
| Warranty | 5 Years |

Scan for full DWS series details!



DWS Series

AWP04 Series

BLENDING STYLE & FUNCTION

Pick from three stylish covers, each creating a unique light pattern to suit your space. Perfect for hallways or entryways, these elegant, durable sconces offer easy installation and a touch of sophistication for both indoor and outdoor spaces.

FORM MEETS FUNCTION

The AWP04 series delivers powerful performance and versatility in a compact design, perfect for any outdoor project. Whether you're lighting building entrances, schools, or multi-use facilities, these fixtures enhance visibility, boost security, and elevate the overall look of your space.

VAPOUR PROOFS

Scan for
full series
details!



VT Series



NEMA 4X VAPOUR TIGHTS

IP66 or IP67, NEMA 4X, and IK10 rated. Power selectable and 3CCT selectable options available. Ideal for parking garages, car washes, industrial applications, food processing plants, paint shops, and other harsh environments.

| | |
|-----------------|--|
| Wattage | 150W, Selectable (15W/20W/25W), (20W/28W/35W), (30W/45W/60W), (70W/80W/90W/105W), (65W/75W/90W/110W), (150W/175W/200W) |
| CCT | Selectable (35K/40K/50K) |
| Voltage | 120-347V |
| Lumens | 2283-30950 lm |
| Length | 2', 4', 8' |
| Finish | White/Grey |
| Warranty | 5 Years |

Security Lights

Scan for
full series
details!



SS Series



SECURITY LIGHTS

Swivel arms allow for directional light. Includes 180° motion detection and 3 operating modes.

| | |
|-----------------|--------------|
| Wattage | 20W |
| CCT | 50K |
| Voltage | 120-277V |
| Lumens | 1815 lm |
| Finish | Black, White |
| Warranty | 10 Years |

Work Lights

Scan for
full series
details!



TWL Series



TEMPORARY WORK LIGHT

Ideal for subway construction, factory/residential renovations, docks, and more.

| | |
|-----------------|----------|
| Wattage | 100W |
| CCT | 50K |
| Voltage | 120V |
| Lumens | 12500 lm |
| Beam | 266° |
| Finish | Orange |
| Warranty | 5 Years |

EXPLOSION PROOF

Scan to view
all Explosion
Proof Series!



EXPL Series



LINEAR EXPLOSION-PROOF

C1, D2, (Groups A, B, C, D), UL844, UL1598, UL8750. Yoke Mount sold separately.

| | |
|-----------------|---------------|
| Wattage | 40W, 80W |
| CCT | 50K |
| Voltage | 120-277V |
| Lumens | 5881-11202 lm |
| Length | 2', 4' |
| Finish | Orange |
| Warranty | 5 Years |

EXPR Series



ROUND EXPLOSION-PROOF

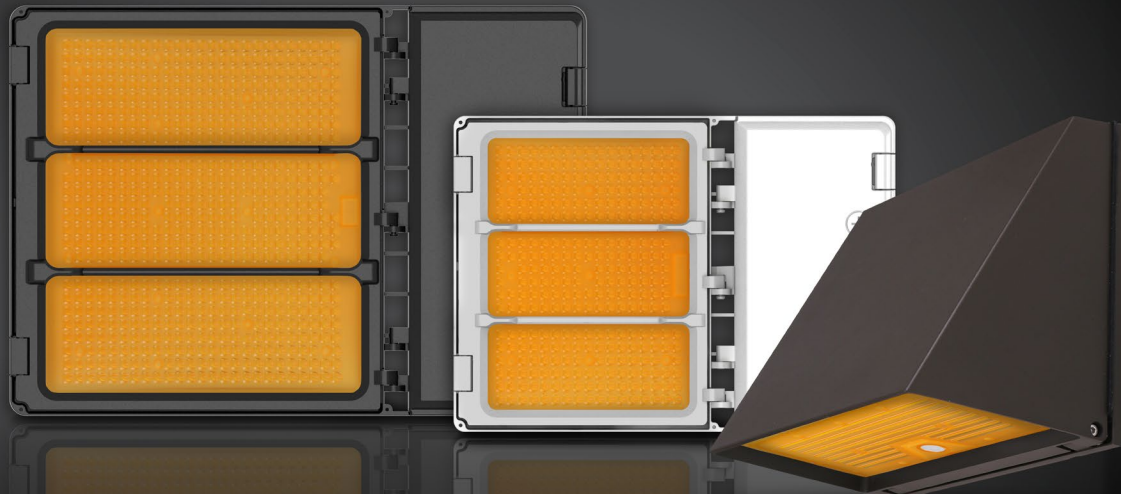
C1, D2, (Groups A, B, C, D), UL844, UL1598, UL8750. Complete with Yoke Mount.

| | |
|-----------------|-----------------|
| Wattage | 60W, 100W, 150W |
| CCT | 50K |
| Voltage | 120-277V |
| Lumens | 8870-23834 lm |
| Finish | Orange |
| Warranty | 5 Years |

TYPE IV AMBER OPTICS

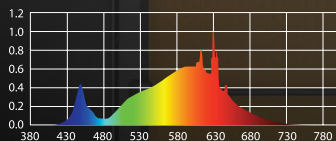
Instantly achieve warmer colour temperatures with CSC LED's easy-to-install Amber Optics! Provides a close CCT match for HPS and LPS retrofits!

| Fixture CCT Setting | 3000K | 4000K | 5000K |
|-----------------------|-------|-------|-------|
| CCT With Amber Optics | 2200K | 2700K | 3000K |

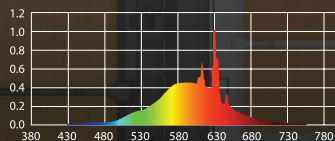


GRAPHED: KWP 40W model

Scan for full KEYSTONE
Amber Optics info



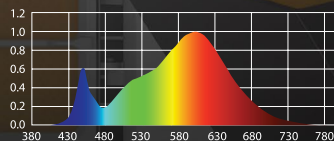
3000K Fixture Setting With
Standard, Clear Optics



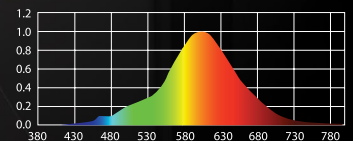
3000K Fixture Setting + Amber
Optics = 2200K CCT

GRAPHED: FL05 150W model

Scan for full FLEX
Amber Optics info



3000K Fixture Setting With
Standard, Clear Optics



3000K Fixture Setting + Amber
Optics = 2200K CCT

ENHANCE VISIBILITY IN RAIN AND FOG

Enhance visibility in foggy and rainy conditions. Amber lenses improve vision by reducing blue light, which reflects off water vapour and reduces clarity.

DARKSKY PRESERVATION & REDUCED WILD LIFE HARM

Warm-toned lighting is less disruptive to nocturnal wildlife and ideal for Dark Sky areas and observatories where natural darkness must be preserved.



DarkSky Approved

All products must be set to 3000K operation or lower to maintain DarkSky compliance

Scan for full
list of DarkSky
approved products



We are proud to offer a range of DarkSky approved lighting solutions!
Light pollution impacts our environment and it is important to adopt responsible
lighting practices. Make an impact and choose DarkSky approved outdoor lighting!



BL01 BOLLARDS

Suitable for pathways, gardens, sidewalks, building entrances; and other landscapes that require low to the ground illumination.



FL04B CONCORDE SERIES

A versatile and modern appearance that brings a pleasing aesthetic to any project! DarkSky approved when used with the Fixed Mount (sold separately).



FLEX AREA LIGHTS

Feature packed, sleek, and attractive Area Lights perfect for any application. DarkSky approved when used with the Fixed Mount (sold separately).



KEYSTONE WALL PACKS

Suitable for use in commercial and industrial building projects needing a sleek, customizable luminaire that enhances building aesthetics.



PTA02 POST TOPS

Elegant look and design ideal for parking lots, pathways, parks, retail settings; and more. Select models DarkSky approved.



WPX WALL PACKS

Ideal for outdoor wall-mount applications such as commercial, industrial, retail, or hospitality buildings. Black and White options available.

Let's Beat Light Pollution Together!



@cscledcorp



@CSC LED



**FOLLOW US ON
SOCIAL MEDIA!**



@CSC LED



@CSC LED



See what our customers are saying about us!

"The CSC LED team is amazing and helpful"

- May 2025 Review



"Fast response to orders and quick response to queries"

- May 2025 Review



"Any time I need help, I'm assisted with experience and knowledge"

- May 2025 Review



"Wonderful service!"

- April 2025 Review



"Very prompt and efficient. Deliveries are exceptionally fast"

- April 2025 Review



CLEARANCE

Visit our Website to browse all Clearance Products.

All fixtures are brand new in the box complete with a 1-year warranty.

In stock and ready to ship!

CLEARANCE

WPX Series



WPX WALL PACKS

Ideal for commercial, industrial, or hospitality buildings.

Wattage 30W, 50W, 80W, 120W

CCT Selectable (30K/40K/50K)

Voltage 120-347V

Lumens 3764-14499 lm

DLC Premium

Finish White

Warranty 1 Year

HB7C Series



HIGH BAYS

Our shatterproof polycarbonate optics meet DLC 5.1 glare standards. Variety of accessories available.

Wattage 100W, 300W*

CCT 50K

Voltage 120-277V, 277-480V

Lumens 14483-40684 lm

Finish Black

DLC Premium

Warranty 1 Year

Scan for full list of clearance items!



FL04B Series



CONCORDE FLOOD LIGHTS

Quick-release, hinged access cover for control compartment. Pre-wired for optional motion sensor (sold separately).

Wattage 100W, 150W, 200W, 300W

CCT 30K

Voltage 120-347V

Lumens 13584-38796 lm

DLC Premium

Finish Bronze

Warranty 1 Year

T-Grid Series



T-GRID INTEGRATED LUMINAIRE

Seamless integration into suspended ceilings allows you to create unique lighting designs.

Wattage 20W

CCT 35K, 40K

Voltage 120-277V

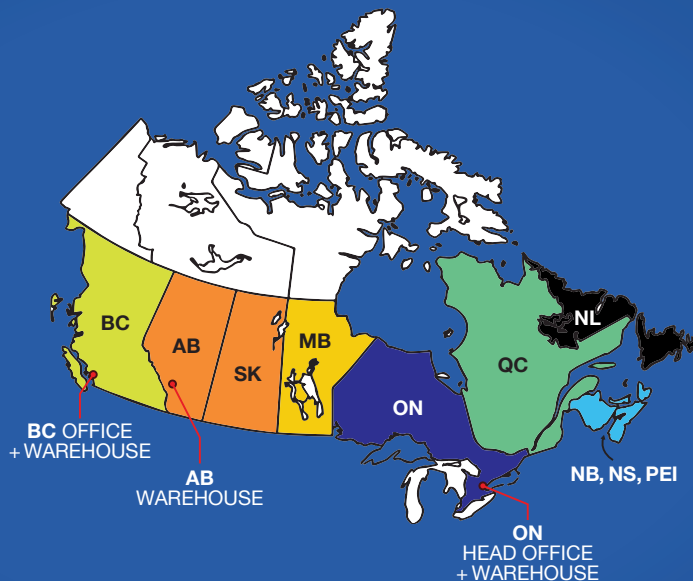
Lumens 2600 lm

Length 4'

Finish Silver

Warranty 1 Year

Sales Agencies Representing CSC LED Across Canada



KWA SALES (BC)

www.kenwattassoc.com
info@Kenwattassoc.com



SENSIBLE ADAPTIVE SOLUTIONS (AB/SK)

www.sensibleadaptive.com
krista.sherven@sensibleadaptive.com



TMC SALES (MB)

www.tmcsales.ca
orders@tmcsales.ca



RONEY MARKETING (ON)

www.roneymk.com
sales@roneymk.com



RICARD AGENCY (QC)

www.agencericard.com
info@agencericard.com



CATALYST SALES (NB, NS, PEI)

www.catalystsales.ca
info@catalystsales.ca



RWM ENTERPRISES (NL)

bmyersptech@bellaliant.com

DISTRIBUTORS

Contact your regional sales agency to learn more about our products and services.

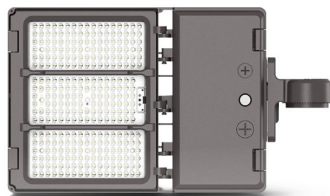
ELECTRICIANS

Contact your regional sales agency to find your nearest electrical wholesaler.

Share Your Experience!

We value your opinion! Have you recently experienced our products or services? We'd love to hear about it. Your feedback helps us improve and ensures we continue to meet your needs.

Scan to
write your
own review!



FL05-150W-3P-3CCT-UD-BZ



"So many options from wattage selectable, mounting brackets, photocell, colour selectable, and different housing colour options. One of our top sellers!"

- Verified Purchaser



KWP-40W-3P-3CCT-UD-BK



"This unit is great, we have these on our building and the area is well-lit up where needed. Great fixtures and design!"

- Verified Purchaser



WCYL-DI-30W-RGBW-LV



"Amazing product easy to use and install. Standard white light looks good and dims well, there are plenty of colour changing options and preset modes."

- Verified Purchaser

CANADIAN OWNED AND OPERATED

Canada may represent only about 3% of the global LED market, but it accounts for 100% of CSC LED's focus, dedication, and business commitment. For over 20 years, CSC LED has been committed to the Canadian marketplace, fostering strong relationships in the electrical industry.



BC BRANCH

1140-2375 Fremont St
Port Coquitlam, BC V3B 0N9
(778) 730-0448

AB BRANCH

13-2355 52 Ave SE
Calgary, AB T2C 4X7
(403) 907-0212

ON HEAD OFFICE

8-540 Jamieson Pkwy
Cambridge, ON N3C 0G5
(519) 880-9833